



AAEA

Grad Student Section Update

The Official Newsletter of the Graduate Student Section

Volume 4, Issue 1

Covering News for January, February, and March 2008

What's Inside?

Open Letter

Facebook & GSS

Extension Competition

C-FARE Internship



CONGRATS TO TETSUYA HORIE

He is the winner of the \$25 Amazon Gift card drawing for renewing or joining the GSS before January 31, 2008.

Are You Still Not a GSS Member?

Look for how to become a member on last page of this newsletter

An Open Letter from the Executive Committee

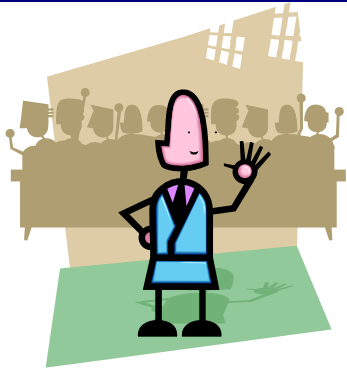
Fellow GSS members, our section is only as strong as our membership, so please help us spread the word about GSS and encourage other graduate students in your department to join GSS when they join the AAEA. The executive committee has been hard at work over the past couple of months to get things rolling for the new year and here are some of the latest announcements:

- **GSS Dues increase to \$10** – Previously dues for membership into GSS was \$5, but this year it was increased to \$10. Dues were increased in order to eliminate the charge to gain admittance to the annual GSS reception at the AAEA meetings. The intent of this fee increase was to increase attendance (and therefore networking) at the reception without students having to pay section membership dues and an additional fee to attend a reception they were entitled to attend already.
- **Special Election for Chair – Elect** – GSS is currently in the process of having a special election for the chair-elect position. As of press time, the election is occurring, with the results to be announced shortly after you receive this newsletter. There was only one candidate for the position, but we believe he will be a very strong addition to this year's team and will make an excellent chair for next year. Please consider running for office later this year when the regular elections are scheduled. More information may be found by checking out the GSS website (www.geocities.com/aaeagss) or contacting any of the GSS officers.
- **Recruitment** - The executive committee is working with the AAEA Board to develop ways to increase participation among graduate students in the section and specifically recruiting talent to run for GSS office. This is one area that we certainly need input from YOU. Those ideas you generate will be given careful consideration and should be passed on to Sarah Low (salow2@uiuc.edu) and Erika Knight (eknight@ufl.edu).

Finally, the executive committee works very hard to make sure that we design programming and disseminate information relevant to you. We are always open to suggestion on how to improve our services and the direction of the section. Best wishes to a successful spring semester!

Sincerely,

The GSS Executive Team



Want to become a member of next year's Executive Committee?

Elections will be held in April or May and the officers will be introduced at the AAEA meeting in Orlando, FL in July.

Stay Tuned!

Chair – Ross Pruitt, Oklahoma State University;
ross.pruitt@okstate.edu

Chair - Elect – Under Special Election

Secretary/ Treasurer – David Ortega, Purdue University;
ortega.dlon@gmail.com

Member at Large, Activities: Erika Knight, University of Florida;
eknight@ufl.edu

Member at Large, Membership – Sarah Low, University of Illinois; salow2@uiuc.edu

Member at Large, Comm. – Chris Bouquot, West Virginia University;
chris.bouquot@mail.wvu.edu

Faculty Advisor – Aslihan Spaulding, Illinois State University

Faculty Advisor – Mike Sykuta, University of Missouri

Faculty Advisor – Daniel Tilley, Oklahoma State University

Faculty Advisor – Andrew Seidl, Colorado State University



&



GSS ON FACEBOOK!

Realizing the need to enhance the networking opportunities for grad students outside of the annual AAEA meetings, the GSS executive committee approached the AAEA Board for approval to launch a Facebook group called the "AAEA-GSS".

The GSS officers are pleased to invite you to join the AAEA Facebook group, a place on Facebook.com where you can interact with other AAEA-GSS members. We hope the Group page will help you find roommates for the upcoming Orlando meetings, learn about other schools' programs or job opportunities and network with your peers, etc. It is our sincere hope that you will take advantage of this opportunity.

For those of you without a Facebook account please don't feel required to join this social networking website. The executive committee will continue to keep you updated on the latest information on competitions and track sessions at the annual meetings via emails, our quarterly newsletter and the GSS website.

The Graduate Student Extension Competition

Overview: The Graduate Student Extension Competition is jointly sponsored by the Extension and Graduate Student Sections of the AAEA and involves extension and outreach applications, plans and programs as developed by the graduate student competitors. The main purpose of the competition is to encourage graduate students to include in their professional education well-developed, extension-type analyses and planning related to their research work.

The Goal: An important goal of this competition is to provide incentives to graduate students to learn to prepare and present appropriate analytical results for a popular extension-type audience. This can be based upon the graduate student's research for a thesis or dissertation. Participation in the contest will enhance the professional growth of the participating students regarding extension programs.

Applications include:

- Applied analysis,
- Appropriate presentation materials, and
- Presentation of the results as if to a public audience using extension program or outreach applications and approaches.

Eligibility: Participating applicants may be:

- Graduate students currently engaged in agricultural economics, agribusiness, natural resources, community resource economics, applied or similar economics MS or PhD programs related to agriculture and/or the food system,
- Those who graduated from such programs in 2007 or later, and
- Those who identify and work with a mentor with experience in outreach or extension activities.

Submission Information: Applications must include:

- Student's name, university, department, address and other contact information
- Title of the extension program to be delivered.
- A summary of the proposed extension program. This must include target audience, delivery plans, communication methods and activities planned for distributing the information to the public such as with fact sheets, pamphlets, press releases, reports, web sites, streaming videos, spreadsheets, workshops, PowerPoint presentations and training activities to be conducted (1 page maximum).

Prizes: Graduate student finalists in this competition will present an oral summary of their extension program as developed for this contest at the AAEA annual meetings in Orlando, Florida. The prizes for this competition will be handled as follows:

- Prizes to the top three graduate students in this competition will be made by the Extension Section and Graduate Student Section of the AAEA (\$500, \$250, \$100 respectively)
- These winners in the competition will receive their prizes at the Extension Luncheon during the AAEA annual meetings.
- The winners will also be acknowledged at the AAEA prizes program.

Contact:

Ross Pruitt, GSS President, Email: ross.pruitt@okstate.edu

Dr. Larry Sanders, Competition Committee Chair, Email: larry.sanders@okstate.edu

Dept. of Agricultural Economics, 513 Ag Hall, OSU, Stillwater, OK 74078

Phone: 405-744-9834, Fax: 405-744-9835,

C-FARE 2008 Science Policy Internship

DEADLINE: February 28, 2008

C-FARE's Science Policy Internship will provide qualified young people in the fields of agricultural and applied economics a unique "hands-on" learning experience in the science policy arena. The successful candidate will have an opportunity to work closely for three to four months with the CFARE Executive Director in Washington, DC monitoring and analyzing agricultural, natural resources and environmental legislation, attending and participating in hearings and briefings, assisting in the preparation of position papers, helping collect information for a database to examine economics grants across the country, and communicating with members of the profession. The intern will also be allowed the opportunity to shadow successful economists in Washington, DC.

The Science Policy Internship program offers flexible start and end dates, however we prefer someone who can begin in May and finish in August, 2008. The internship carries a stipend of up to \$1,000 per month, plus living expenses of up to \$500 per month, to be negotiated based on experience, time frame and need. The intern is responsible for his/her health insurance and travel expenses to and from Washington, DC.

Eligibility

1. Applicants must have completed the first semester of their junior year by January 15, 2008 in agricultural and applied economics, agribusiness, or a closely related discipline. We encourage applications from both graduate and undergraduate students.
Applicants must be a U.S. citizen.
2. Applicants must have a strong interest in the science policy arena.

Evaluation

1. Departments of Agricultural or Applied Economics are encouraged to submit one name per department.
2. The C-FARE Executive Director and a committee of C-FARE Board Members will screen all applications received by February 28, 2008.
3. Interviews will be held in March by telephone.



Preparing the Application - The following information will be requested for your resume to be considered.

1. Include your full name, mailing address, phone number, and e-mail address.
2. Prepare a cover letter describing why you are interested in the internship.
3. Include a resume that describes your education and work experience.
4. Provide a statement that describes your qualifications and career goals in 300 words or less.
5. Provide names, phone numbers and e-mail addresses of three individuals who will separately send letters of reference
6. Resumes and all reference letters must be received in the C-FARE office by February 28, 2008.

7. All materials can be sent to:

Tamara Wagester – C-FARE Executive Director tamarawagester@cfare.org
900 Second Street, NE Suite 205 Washington, DC 20002,
202-408-8522 (phone), 202-408-5385 (fax) www.cfare.org

How do I Join GSS?

Myth: If I am a graduate student and sign up for membership of the AAEA, I become automatically a member of the GSS.

Truth: You need to sign up for the GSS membership in addition to your AAEA Membership!

There is a list of sections with their associated membership fees on the AAEA Membership form, so be sure to check the box next to GSS when you join the AAEA or each time when renew your AAEA membership. GSS memberships must be renewed every year, just like the AAEA membership.

Myth: Membership in the GSS is expensive.

Truth: Membership in the GSS Section is only \$10.00!

In relative terms this is only about 12% of your AAEA Membership.

Myth: There is no information available about the GSS, so I don't understand what they do.

Truth: There is more information available about the GSS than ever before!

Our website can be viewed at <http://www.geocities.com/aaeagss>. This newsletter will be available throughout the year! In addition, *The Exchange*, the AAEA Newsletter, publishes the "Students' Corner" section, which is written by the GSS Executive Committee. Our officers frequently send emails with important announcements and updates. If you are interested in receiving email updates about our events, activities, and opportunities please send an email to aaeagss@yahoo.com with the subject being "Add me to the GSS List."

WHAT TO LOOK FOR IN THE NEXT NEWSLETTER

- How to become a GSS Officer
- Discussion of the Case Study Competition
- Information on the Young Professional Teaching Academy
- A listing of GSS Track Sessions in Orlando



Check out the GSS WEBSITE at <http://www.geocities.com/aaeagss>

E-mail us: aaeagss@yahoo.com