

## AAEA Trust Profile: Christiane Schroeter

AAEA Trust Profile is a new bi-monthly series following up with [AAEA Trust](#) sponsored scholarship, fellowship and grant winners. This issue features Christiane Schroeter, Associate Professor in the Agribusiness Department at the California Polytechnic State University, San Luis Obispo. Christiane won the [Sylvia Lane Mentor Fellowship](#) in 2008 and 2013. The Lane Mentor Fellowship provides an opportunity for young female scholars working on food, agricultural, or resource issues to collaborate with an established expert at another university, institution, or firm.



***How did winning the Sylvia Lane Mentor Fellowship help accomplish your research in 2008?***

The 2008 Sylvia Lane Mentor Fellowship started a research relationship that has been active for the past six years.

The Fellowship allowed me to collect student data about dietary and health knowledge, and food culture at the University of Florida and Arkansas State University. We conducted electronic surveys using professional software, which allowed us to obtain a 24-hour recall of students' dietary intake. Without the fellowship, this research would not have been possible because it provided us the resources to purchase this software.

The research findings were submitted to the Agribusiness & Food World Forum of the International

Food and Agribusiness Management Association, where it was selected for the Best Paper Award competition. Our manuscript was also published in the *International Food and Agribusiness Management Review*. I successfully applied for additional grant funding, which supported one M.S. and one B.S. student's research projects. Based on this additional data collection at Cal Poly San Luis Obispo, I oversaw one senior project and one Master's thesis. These student projects were presented at the 2009 IAMA meetings in Monterey, CA.

***Your mentor then was Lisa House from University of Florida; do you still collaborate with her?***

Yes, I still work with Lisa and she continues to be a mentor. I have a great amount of trust in her and respect for her work. One result is that whenever I put together a session for a conference, I check with her to see whether she has any papers that might fit into the proposed session. I know that she is reliable and will provide a stimulating

*Continues on page 2*

### INSIDE THIS ISSUE

AAEA Trust Profile	1
AAEA News	3
C-FARE	5
Section Updates	10
Other News & Calls	12
Job Openings	14

*Continued from page 1*

contribution. Since 2008, we have jointly organized several track sessions and organized symposia for AAEA. I also contact her when I have a job-related question such as Tenure and Promotion, and she is always helpful in providing guidance as my mentor. Lisa and I greatly enjoyed our joint research experience on food culture and we continued working on this project. In 2013, we submitted another paper for publication based on an additional data collection and analysis.

***You won the Lane Fellowship last year for your research proposal on "Estimating the Relationship between Social Networks and Obesity", what is the status of your research?***

The Sylvia Lane Fellowship has facilitated this research by establishing the relationship with Tim Richards at Arizona State and allowing me to work on a project that might continue for the next few years. The fellowship supported my visit to work with Tim Richards at ASU in December 2013. I look forward to working on this project with Tim to glean more of his expertise and guidance. Currently, we are in the process of applying for a large-scale national grant, which would fund several years of data collection and analysis. We are also applying for smaller grant proposals and will present our research about the impact of social networks on obesity as part of conference presentations.

***How did you meet your mentors for this fellowship?***

I met both of my mentors at the AAEA Annual Meetings, which provide great networking opportunities. I have been active in various leadership functions of the AAEA for the past 12 years. Lisa House was instrumental in getting the [Graduate Student Section \(GSS\)](#) started by

organizing the case study competition. I met Lisa as I began my involvement on the executive board of the GSS while I was a graduate student at Purdue University in 2003. A year later, I became the GSS chair-elect and chair in 2004 and 2005, respectively. I met Tim at the 2007 AAEA meetings during a paper presentation in Portland, OR. Given our common research interests, our paths frequently crossed at professional meetings. Tim worked with Steve Hamilton, my colleague at Cal Poly, on a project related to social networks and food choice. In 2012, we started talking about a joint research project on social networks and obesity.

***What led you to pursue food and agricultural economics?***

I have long been passionate about food intake and health. However, I knew that I did not want to work in a lab as a scientist. Through an internship as Marketing Assistant with the Federal German Department of Nutrition, Agriculture and Forestry, I discovered my passion in analyzing consumer choice behavior with regard to food consumption. I greatly enjoy my research on the economics of obesity and I am appreciative for my great mentors along my career path.

*For more information or to donate to the AAEA Trust please visit the Trust website:*

<http://www.aaea.org/trust>.



## AAEA News

---

### Register for the Employment Center

Registration is now open for the 2014 Employment Center taking place July 27–29, during the [2014 AAEA Annual Meeting](#) in Minneapolis, MN. The Employment Center offers a great opportunity for highly qualified candidates to connect with a number of employers during the Annual Meeting. This year's Employment Center features a simplified registration and posting process that is now integrated into the newly updated [AAEA Job Board](#). Applicant registration is **FREE**.

For more information please visit the online [Employment Center](#). If you have any questions please feel free to contact [Sarah Kenner](#). We hope to see you in Minneapolis!



---

### Mobile App is Back

AAEA is excited to bring back the mobile app for its second year. The mobile app has many great features including:

- **My Schedule** – add sessions and events right onto your personal schedule.
- **Sessions** – browse the entire program by day or by track; add events to your schedule and rate sessions.
- **Session Participants** – view session participants including presenters, moderators, panelists, and more.
- **Exhibitors** – view exhibitor profiles
- **Maps** – navigate your way around the meeting with floor plans highlighting rooms used during the meeting
- **Social Media** – connect via Facebook or LinkedIn. On Twitter, follow [@AAEA\\_Economics](#) and share your meeting experience using #aaea2014.
- **Friends** – meet and connect with other Annual Meeting attendees.

Enhance your Annual Meeting experience by searching for “AAEA2014” in your app store to [download](#) the mobile app on your smartphone or tablet!

## AAEA News

---

### Call for Hosts: LI-LMI Pre-Conference Workshop at Annual Meeting

Earlier this year, the AAEA Trust Committee awarded six [economists from low income and lower middle income \(LI-LMI\) countries](#) full travel grants to attend and present their research at the [2014 AAEA Annual Meeting](#) in Minneapolis.

AAEA would like to pair each of the grant recipients with a host who will be attending the meeting to encourage networking, communication, and collaboration among a more diverse pool of professionals. The main role of the host is to attend a Pre-Conference workshop on Saturday, July 26 and help the delegate prepare for the presentation of their research in a Selected Presentation session.

Our hope is that some of the travel grant winners and their hosts will apply for the [Uma Lele Mentor Fellowship](#) program which provides funding for a mentorship relationship between an AAEA member and an economist from a low income and lower-middle income country. Eugenie Maïga, from the African Center for Economic Transformation (ACET) in Ghana, was a LI-LMI grant recipient last year and won the Uma Lele Fellowship this year. The ultimate goal for this workshop is to create vibrant, long-lasting networks of scholars working on current and newly emerging challenges to economic development in these regions.

If you are interested in participating or would like to nominate someone, please contact Angela Ludwig ([aludwig@aaea.org](mailto:aludwig@aaea.org)) at the AAEA Business Office.

### Winners of the 2014 Travel Grant for Economists from Low Income or Lower-Middle Income Countries

- **Opeyemi Ayinde**, from the University of Ilorin in Ilorin, Nigeria, will be presenting her paper “Analysis of Supply Response and Price Risk on Rice Production in Nigeria”
- **Alaba Modupe Dare**, from the Federal University of Agriculture in Abeokuta, Nigeria, will be presenting her paper “Rural Households' Access, Willingness to Pay (WTP) and Factors Influencing WTP for Safe Water and Sanitation in Southwest Nigeria”
- **Taiwo Ejiola Mafimisebi**, from Federal University of Technology in Akure, Nigeria, will be presenting his paper “Responsiveness of Spatial Price Volatility to Increased Government Participation in Maize Grain and Maize Meal Marketing in Zambia”
- **Assa Maganga**, from Agriculture and Natural Resources Management Consortium (ANAMARC) in Lilongwe, Malawi, will be presenting his paper “A Food Demand System Estimation for Rural Malawi: Estimates Using Third Integrated Household Survey Data”
- **Sendhil Ramadas**, from the Directorate of Wheat Research in Haryana, India, will be presenting his paper “Performance and Relevance of Wheat Futures Market in India – An Exploratory Analysis”
- **Rajib Sutradhar**, from the Jawaharlal Nehru University in New Delhi, India, will be presenting his paper “Procurement of Fresh Produce by Modern Marketing Channels and their Impact on Farming Household–Evidence from India”

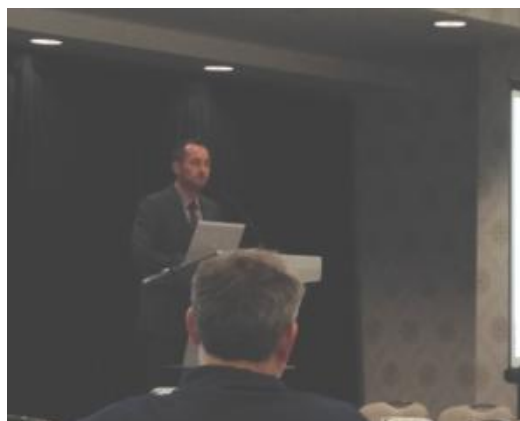
## AAEA News

---

### Invited Speaker Jordan LeBel Kicks Off Symposium in Montreal

Local Montreal invited speaker, Jordan LeBel kicked off the program at the [Social Networks, Social Media and the Economics of Food Symposium](#) with his presentation titled “Fun, Fame and Tweets: How Social Media is Shaping Food Preferences and Eating Behaviour.” LeBel is the Director at the Luc Beauregard Centre of Excellence in Communications Research and an Associate Professor of Marketing at Concordia University. The focus of LeBel’s presentation was how social media influences consumer’s food choices on a daily basis. Social Media is a growing tool that companies are using to reach, influence and listen to their consumers. Thank you Jordan for the inspirational presentation!

The final program is [available online](#) for more information about the symposium and speakers. The Social Networks, Social Media and the Economics of Food Symposium is being held in Montreal from May 29–30.



## C-FARE

---

### *DC Update*

#### [FY 2015 Appropriation Bills – Agriculture](#)

Today, May 29, the House Appropriations Committee (Chairman Rogers, R-Ky.) will mark up the fiscal 2015 Agriculture Appropriations bill. The current legislation would provide \$20.9 billion in discretionary spending for the USDA, FDA, and CFTC—about even with fiscal 2014 levels. Debate is expected to center around bill language that would delay compliance with school nutrition rules for lunches and school lunch purchasing provisions. The current bill includes \$85.8 million for ERS; \$169.4 million for NASS; and \$325 million for NIFA’s AFRI. **Coverage/Related:** [C-FARE](#) [Twitter](#); [COPAFs Report](#); [ASA’s Science Policy Blog](#)

#### [FY 2015 Appropriation Bills – Commerce, Justice, and Science](#)

Also today, the House of Representatives are debating and voting on amendments to the House

Commerce, Justice, and Science FY 15 Appropriations Bill (HR 4660). An open rule, gave lawmakers the freedom to introduce any relevant amendments. The committee passed version of the bill would provide \$51.2 billion in funding for the Commerce and Justice Departments, and science programs. Several amendments offered by House Members to the proposed bill included cuts to the Census, NSF’s Directorate for Social, Behavioral and Economic Sciences (SBE), and the Economic Development Administration. Senate appropriators will begin moving their version of the bill at a subcommittee markup next Tuesday, with the full committee to follow on June 5. **Coverage:** [C-FARE Twitter](#); [AAAS’ Matt Hourihan](#); [National Humanities Alliance](#); [COSSA](#)

*Continues on page 6*

## C-FARE

*Continued from page 5*

### [Authorization Bills – NSF Reauthorization Advanced by House Subcommittee, May 28, 6 PM ET](#)

The House Science, Space and Technology Subcommittee advanced a two-year reauthorization of federal science programs (HR 4186) yesterday. Frontiers in Innovation, Research, Science, and Technology Act of 2014 (also known as the FIRST Act), includes authorization for the National Science Foundation (NSF) the National Institute of Standards and Technology (NIST) and the Office of Science and Technology Policy. Congress last reauthorized the programs in 2010 (PL 111–358); a measure which expired last year. The adopted (20–16) bill would reauthorize \$8 billion for the programs in the current fiscal year and \$8.1 billion in fiscal 2015. *Within the amended bill is an adopted amendment (20–15) by Representative Dana Rohrabacher, R-Calif. that would decrease the authorization for the NSF's Social, Behavioral and Economics Directorate by \$50 million.* Source: CQ's David Michaels

### ***Congratulations to the 2014 C-FARE Leadership Award Recipients!***

The [Council on Food, Agricultural and Resource Economics \(C-FARE\)](#), with support from the [Agricultural & Applied Economics Association \(AAEA\) Trust](#), announces the C-FARE/AAEA Early Career Professionals Leadership Award recipients. The award recipients will participate in a two-day program in Washington, DC, June 19–20, 2014. The program will expose the young leaders to federal funding opportunities

and train them to be exceptional science policy communicators. This award is an opportunity for AAEA members to enhance their careers through networking and outreach. C-FARE had an outstanding group of applicants for 2014.

Congratulations:

- Lisa Elliott, South Dakota State University
- Kelly Grogan, University of Florida
- Nathan Hendricks, Kansas State University
- Tyler Mark, University of Kentucky
- Juan Sesmero, Purdue University

Thank you to all who took the time to apply.

### ***Educational Programming–Past Events***

#### **Jon Brandt Public Policy Forum on ‘Big Data’ Web Archive Available**

C-FARE hosted the [1st Annual Jon Brandt Policy Forum – “Increasing U.S. Agriculture’s Competitive Edge: How Do Public Data and Big Data Fit?”](#) –in Washington, DC on April 29. The event was covered by agricultural press and non-profit organizations, as well as attended by congressional staff and DC stakeholders.

Media/stakeholder coverage:

- [DTN Progressive Farmer – Jerry Hagstrom](#)
- [COSSA Washington Update – Wendy Naus](#)
- [The Economist – Blog/Schumpeter \(related\)](#)

*Continues on page 7*



## C-FARE

*Continued from page 6*

C-FARE thanks the co-sponsors for their support of the inaugural event:

- [AAEA Trust](#)
- [American Farm Bureau Federation](#)
- [United Soybean Board](#)
- [USDA Economic Research Service](#)
- [USDA National Agricultural Statistics Service](#)
- [USDA Office of the Chief Economist](#)
- [North Carolina State University](#)

In-kind was provided by:

- [Deere & Company](#)
- [Agri-Pulse Communications, Inc.](#)
- Monsanto Company

### *C-FARE/N C-FAR Briefings*

On Thursday, May 8, 2014, the [C-FARE Blue Ribbon Expert Panel on Energy](#) co-sponsored the congressional briefing: “*Detours on the Road to Sustainable Feedstock Production for Cellulosic Biofuel: Assessing Multidimensional Policy Approaches*”.

**Event summary:** High yielding energy crops, such as miscanthus and switchgrass, have been considered sustainable feedstocks for cellulosic biofuel production in the United States because of their potential to be grown on marginal lands and provide environmental benefits to soil and water quality. However, production of these feedstocks may expose farmers to several types of risk, due to volatility in yields and prices. Existing policies do not fully address the liquidity constraints and may worsen the variability in income over the life-span of these crops. Our research examines the design of actuarially fair crop insurance for energy crops

that reduce the riskiness of production. It also assesses the effectiveness of three policy instruments, a crop insurance subsidy, an establishment cost share and a biomass price subsidy, in promoting energy crop production. The implications of these policies for the geographical distribution of energy crop acreage will be discussed.

- **Speaker:** [Dr. Madhu Khanna](#), Department of Agricultural and Consumer Economics at the University of Illinois at Urbana-Champaign. Dr. Khanna’s slides are available [here](#). Dr. Khanna and C-FARE Executive Director, Caron Gala also met with staff members working for her congressional delegation and the Senate Energy and Natural Resources Committee.
- [Choices Magazine Issue on the Economic and Policy Analysis of Advanced Biofuels](#): The current theme presents economic and policy analysis on advanced biofuels. Its aim is to explain the various costs and benefits associated with the expansion and commercialization of advanced biofuels and their co-products.

On Monday, May 19, 2014, the [C-FARE Blue Ribbon Expert Panel on Development](#) co-sponsored the congressional briefing: “*Shifting Winds in International Agricultural Development: What’s Behind Africa’s Turnaround?*”

**Event summary:** Over the past decade, many African countries have reversed their earlier economic decline and achieved some of the world’s fastest rates of economic growth and job creation. This turnaround is associated with slow-moving trends in rural demography and

*Continues on page 8*

## C-FARE

*Continued from page 7*

agricultural productivity that lifted economic prospects in Asia from the 1980s, leaving Africa as the world's poorest continent since the 1990s. Those winds have now shifted, creating economic opportunities in African agriculture and the prospect of rapid improvement in food security, nutrition and health. Today's seminar discusses recent evidence on the speed and timing of rural development in Africa and other regions, and what these trends mean for US foreign assistance and agricultural development policy. See photos [here](#).

- **Moderator:** [George W Norton](#), Professor in the Department of Agricultural & Applied Economics at Virginia Tech (Chairman of the C-FARE Blue Ribbon Expert Panel on Development)
- **Speaker:** [William A. Masters](#), Professor and Chair of the Department of Food and Nutrition Policy at the Friedman School of Nutrition, Tufts University (Panel Member)

Drs. Norton and Masters, and C-FARE Executive Director, Caron Gala also met with staff members working for relevant congressional committees as well as Dr. Sonny Ramaswamy, the Director of the National Institute of Food and Agriculture, and Robbin Shoemaker, National Program Leader in the NIFA Division of Agricultural Systems.

### *Opportunities*

[Competitive Grant to Establish a USDA Center for Behavioral and Experimental Agri-Environmental Policy Research](#) – ERS invites proposals for a competitive grant to establish and fund a [USDA Center for Behavioral and Experimental Agri-Environmental Policy Research](#) that will use

behavioral and experimental economics to conduct research on how policies and programs can influence the provision of ecosystem services from agricultural lands. The deadline for submission of applications is **11:59 p.m., July 7, 2014**.

USDA NIFA [Integrated Research, Education, and Extension Competitive Grants Program — National Integrated Water Quality Program \(NIWQP\)](#): The (abridged) priorities for FY 14 are: *Priority 1*: drought severity, reduction, and preparedness. Indicators or triggers are used to determine drought aid and eligibility. Applicants must develop the science behind the most appropriate drought triggers and provide an understanding of the connection between trigger levels and drought management responses or decisions. This priority seeks the development of a trigger or triggers and appropriate science based management decisions, practices and/or responses with broad applicability across the states and territories of the U.S. *Priority 2*: To aid decision making so as to optimize the allocation of water use between productive and environmental uses. Optimal use of water would simultaneously consider the nexus of the environment, ecosystem services and the demands of associated urbanizing lands and agriculture.

The goal of this priority area is to provide estimates of the economic value of water across different uses. Economic valuation depends not only on quantity but other competing demands such as quality, location, reliability of access, and time of availability. Quantifying the value of water will provide valuable signals to agricultural producers, rural communities and policy makers to aid

*Continues on page 9*



## C-FARE

*Continued from page 8*

decision-making for allocating agricultural water use across consumptive or non-consumptive uses. Deadline: **July 3, 2014**.

### [NSF Experimental Program to Stimulate Competitive Research \(EPSCoR\)](#)

The Experimental Program to Stimulate Competitive Research (EPSCoR) is designed to fulfill the mandate of the National Science Foundation (NSF) to promote scientific progress nationwide. A jurisdiction is eligible to participate in EPSCoR programs if its level of NSF research support is equal to or less than 0.75 percent of the total NSF research and related activities budget for the most recent three year period (see eligibility table). Through this program, NSF establishes partnerships with government, higher education, and industry that are designed to effect sustainable improvements in a jurisdiction's research infrastructure, Research and Development (R&D) capacity, and hence, its R&D competitiveness. Research Infrastructure Improvement Track-1: (RII Track-1) awards provide up to \$4 million per year for up to 5 years to support physical, human, and cyber infrastructure improvements in research areas selected by the jurisdiction's EPSCoR steering committee as having the best potential to improve future R&D competitiveness of the jurisdiction. Letter of intent deadline: **July 8, 2014**.

### [NSF Seeking to Fill EPSCoR Program Director Position](#)

The office is looking to fill one position in March, 2014 and the second in August, 2014. The EPSCoR program is directed at those jurisdictions that have historically received lesser amounts of NSF Research and Development (R&D) funding.

Twenty-eight states, the Commonwealth of Puerto Rico, Guam, and the U.S. Virgin Islands currently participate. Through this program, NSF establishes partnerships with government, higher education and industry that are designed to effect lasting improvements in a region/jurisdiction's research infrastructure, R&D capacity and hence, its national R&D competitiveness. More information about EPSCoR programs can be found [here](#).

### **The Council on Food, Agricultural and Resource Economics (C-FARE)**

C-FARE is a non-profit organization dedicated to strengthening the national presence of the agricultural economics profession. C-FARE's governing board includes prominent agricultural economists representing a wide range of public and private sector interests. Support C-FARE by donating to the [AAEA Trust](#), selecting the C-FARE option.

*900 Second Street, NE Suite 205  
Washington, DC 20002*

[www.cfare.org](http://www.cfare.org)

*Follow C-FARE on Facebook and Twitter!*



## Section Updates

---

### **Senior Section Partners with Econometrics Section to Sponsor Session on Prioritizing Government Statistics**

Budget appropriations for discretionary programs, like those of most Federal research and statistical agencies, are not likely to rise in the next few years and may continue to decline in absolute value. Yet, the output of statistical agencies, from those in USDA, to the Census, Bureau of Labor Statistics, and National Center for Health Statistics, to name a few, are input to commodity market modulation, agribusiness and other market decision making, and research performed by AAEA members and other applied economists. Statistical agencies themselves are operating under great uncertainty. Each has gone through prioritization processes to identify programs that would have to be discontinued if they receive funding below (or in some cases, at) the 2013 sequestration level.

Most agencies eschew making their own across-the-board cuts since nibbling away at the full suite of current programs would reduce data quality. Users of Federal statistics should thus be prepared for potential elimination of some surveys, data series, indicators and/or statistical programs. How can the users of valuable Federal statistical data make their data/information priorities known to the agencies that must make these tough decisions?

This AAEA session, at **2:45 pm, Monday, July 28**, will provide a platform for the collection of AAEA member priorities and the initiation of a process

to systematically collect them. While not every perspective on priorities can be represented in one session, several perspectives will be offered. Vigorous audience discussion will be encouraged and a voting "slate" will be offered for reaction. Please attend this important session and let your voice be heard.



## Section Updates

---

### Graduate Student Section AEM/GSS Case Study Competition

The [case study competition](#) is a long and prestigious tradition in the [Graduate Student Section](#). Every year, groups of students have a chance to show off their case study skills and win prize money as well as the great honor of being a case study competition winner. In collaboration with the [Agribusiness Econometrics and Management Section](#), the Graduate Student Section Case Study Competition allows graduate students to test their communication skills and their ability to apply their knowledge of agricultural economics and agribusiness subjects to practical situations. Students competing in the competition will receive a copy of the case study at least two weeks in advance of the AAEE Annual Meeting.

#### AEM/GSS Case Study Competition Rules:

Each team should prepare an oral summary of their solution to the case that will last no more than 15 minutes. Presentations lasting over 15 minutes will be penalized. After the presentation, teams should be prepared to answer questions from the judges on their interpretation of the case.

Teams can be comprised of up to three graduate students. Students may either compete as a team from the same school, or may choose to be mixed with students from other schools. If there is only one student from a school that wants to participate, the student can compete on their own, or he/she can be matched with other students. In the case of teams that are matched with individuals from different universities, competitors will be notified of their teammates as soon as possible, but no later than the same day the case is announced.

#### AEM/GSS Case Study Competition Prizes:

The top three teams will receive plaques and cash prizes.

- First Place: \$300
- Second Place: \$200
- Third Place: \$100

#### Specific Information for the 2014 Case Study Competition:

The number of rounds will be determined by the number of teams entered. The final round will be composed of the top 3 teams. In addition to plaques and cash prizes, the three finalist teams will also be recognized during the AAEE Awards Ceremony.

- Sunday, July 27, 8:00 a.m. – 3:00 p.m.:  
First Rounds of Competition
- Monday, July 28, 1:30 p.m. – 4:00 p.m.:  
Final Round
- Monday, July 28, 6:30 p.m. – 7:30 p.m.:  
Awards Ceremony

Students participating in the case study competition will need to be registered for the Annual Meeting AND the Case Study Competition. Students should register for the AAEE Annual Meeting through the 2014 Annual Meeting Registration Form which is available [online](#).

Each team must also complete the [Case Study registration form](#) identifying their teammates and send it to AAEE no later than **June 16, 2014**.

Please direct any questions regarding the [2014 AAEE Case Study Competition](#) to Dr. Aslihan Spaulding ([adspaul@ilstu.edu](mailto:adspaul@ilstu.edu)) or GSS Section Chair, Brandon McFadden ([brandon.mcfadden@ufl.edu](mailto:brandon.mcfadden@ufl.edu)).

## Other News & Calls

---

### Call for IAAE Secretary-Treasurer

Walt Armbruster plans to continue to serve as [IAAE](#) Secretary-Treasurer until the August, 2014 IAAE Board meeting, at which he will officially resign. At that time, the Board will appoint someone to fulfill Walt's unexpired term, which ends at the conclusion of the 2015 International Conference of Agricultural Economists (ICAE).

Any IAAE member interested in serving as Secretary-Treasurer should submit an application, including a 300–500 word statement of their perspective on future opportunities and directions for the IAAE, by **June 30, 2014** to [IAAE@execinc.com](mailto:IAAE@execinc.com). A curriculum vita should be attached. A decision to appoint a replacement for Walt will be made by the Board at its August, 2014 meeting. Subsequently, the IAAE Nominating Committee will include the appointed Secretary-Treasurer in its report to the Board on candidates for election to the Board for a three year term for vote by the members in early 2015. The Secretary-Treasurer may subsequently be nominated for successive 3-year terms.

From September 2014, Walt will continue as a consultant to IAAE through December 31, 2015 to work with the new Secretary-Treasurer to assure a smooth transition and complete follow up payments to grantees, reports to funders about grants made, and to wrap up other details associated with the 2015 ICAE.

The roles and duties of the Secretary-Treasurer are defined in the International Association of Agricultural Economists, Inc. Bylaws of 9–30–2013, Section 7.2.3:

“Secretary/Treasurer. The Secretary/Treasurer or their designee shall record the minutes of the meetings of the Board of Directors and the

Executive Committee in one or more books provided for that purpose; see that all notices are duly given in accordance with the provisions of these Bylaws or as required by the law; be custodian of the corporate records; and perform all duties incident to the office of Secretary/Treasurer. The Secretary/Treasurer shall also have supervision through the Office of the Executive Director of all monies, securities and other valuable properties of the Corporation and shall oversee accurate accounts of the receipts and disbursements of the Corporation in books belonging to it. The Secretary/Treasurer shall ensure that all monies and other valuable effects are deposited in the name and to the credit of the Corporation in such accounts and in such depositories as may be designated by the Board of Directors. The Secretary/Treasurer shall check monthly the disbursements of funds of the Corporation in accordance with authority of the Board of Directors. The Secretary/Treasurer shall render to the President and the Board of Directors whenever requested or otherwise required, a written detailed account of the transactions and of the financial condition of the Corporation, including a statement of all its assets, liabilities, and financial transactions. The Secretary/Treasurer shall perform such other duties as the Board of Directors, through the President, direct, and such other duties as usually pertain to

*Continues on page 13*

*Continued from page 12*

the office of Secretary/Treasurer.”

In practice, the Secretary–Treasurer provides continuity as the other Board members rotate every three years; manages daily IAAE operations in collaboration with Executive Director, Inc., which maintains the membership database and the IAAE website, and provides financial services; oversees IAAE’s fiduciary responsibilities; manages official communications, contracts and memoranda of understanding with local hosts of the triennial ICAE and inter-conference symposia; coordinates funding solicitation and subsequent reporting to funders through the Fund for the ICAE to support developing country participation in the ICAE; organizes the annual IAAE Board meetings in conjunction with the President;

initiates communications to members; and manages other items requiring IAAE attention.

For further information, contact President Jo Swinnen ([Jo.Swinnen@kuleuven.be](mailto:Jo.Swinnen@kuleuven.be)) or Walt Armbruster ([walt@farmfoundation.org](mailto:walt@farmfoundation.org)).




---

### **Call for Co-Editor for *Agricultural Economics***

In 2015, after 9 years of service, Gerald Shively will step down as co-editor of [IAAE](#)’s journal *Agricultural Economics*. Awudu Abdulai will continue to serve in that capacity through 2018. Under their leadership, the journal has risen steadily in status and number of submissions.

The IAAE Board is now seeking formal expressions from individuals who would like to join Awudu as a co-editor, to serve a 6-year term beginning in 2015. Members are invited to contact President Jo Swinnen, Co-Editors Jerry Shively and Awudu Abdulai, or Secretary–Treasurer Walt Armbruster for more information. The application should be brief. It should set out experience which illustrates qualifications for the job, highlight main areas of expertise, and provide a statement indicating editorial philosophy for *Agricultural Economics*. A

curriculum vita should be attached. Potential editors should also indicate what, if any, support they might be able to obtain from colleagues and the institution in which they work. IAAE offers a support package to the Editor, which will be negotiated with the successful candidate.

Send expressions of interest to IAAE (<http://www.iaaeagecon.org/about/contact.html>) by **June 30, 2014**. Selection will be made by the IAAE Board at its August 2014 meeting, and the appointment will be effective July 1, 2015.

## Job Openings

---

AAEA hosts employment ads for positions of interest to our members. Please visit our [Employment page](#) to view the latest listing of job opportunities.



Join us



The Exchange Volume 36, Issue 10  
May 2014

**The Exchange** is published biweekly  
by the Agricultural & Applied  
Economics Association.

Submit all items to:

AAEA

555 E. Wells Street, Suite 1100

Milwaukee, WI 53202

Phone: (414) 918-3190

Fax: (414) 276-3349

e-mail: [info@aea.org](mailto:info@aea.org)

Website: <http://www.aea.org>

Edited by Angela Ludwig, AAEA

Communications Coordinator