

# Final Program

[www.aaea.org/2014am](http://www.aaea.org/2014am)  
#aaea2014



**2014 AAEA  
Annual Meeting  
Minneapolis MN**  

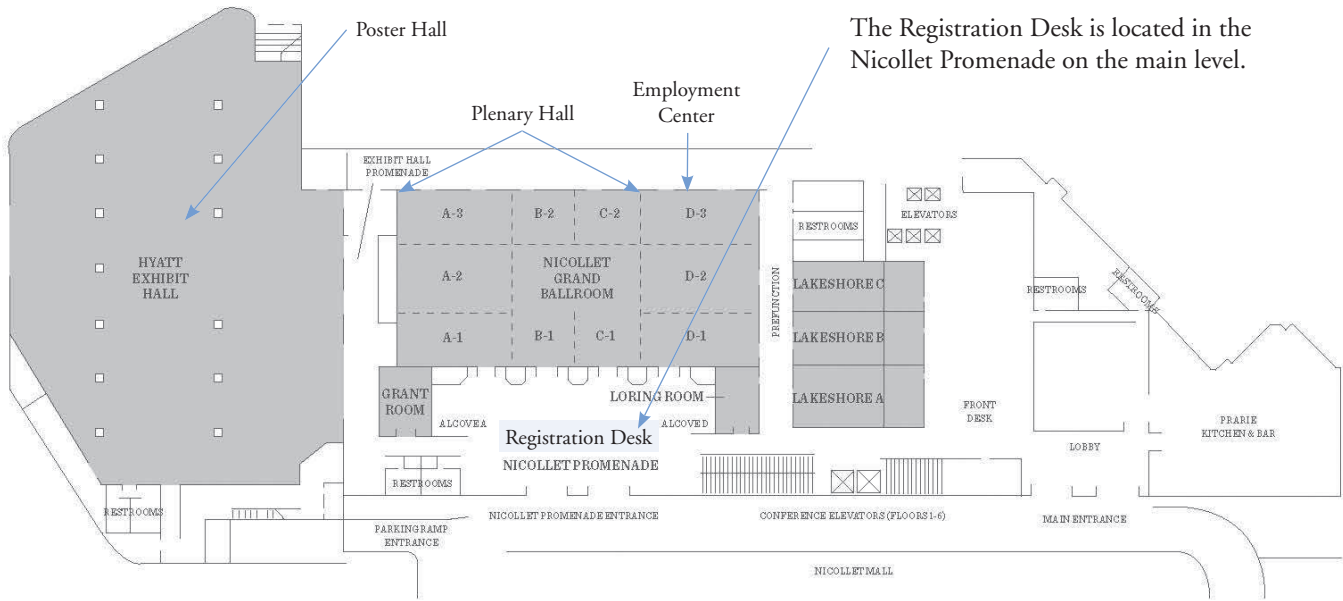
---

**July 27-29, 2014**



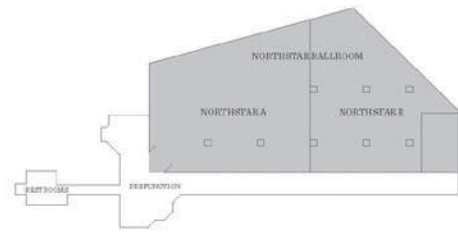
# Hyatt Regency Minneapolis Floorplan

## Main Floor

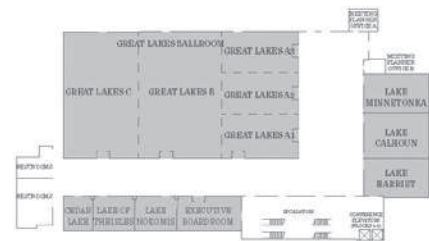


The Registration Desk is located in the Nicollet Promenade on the main level.

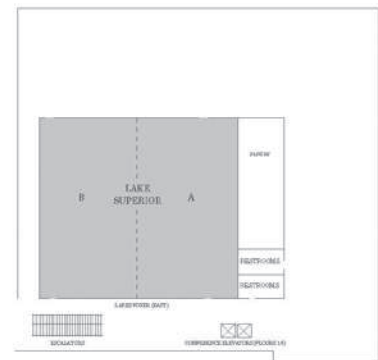
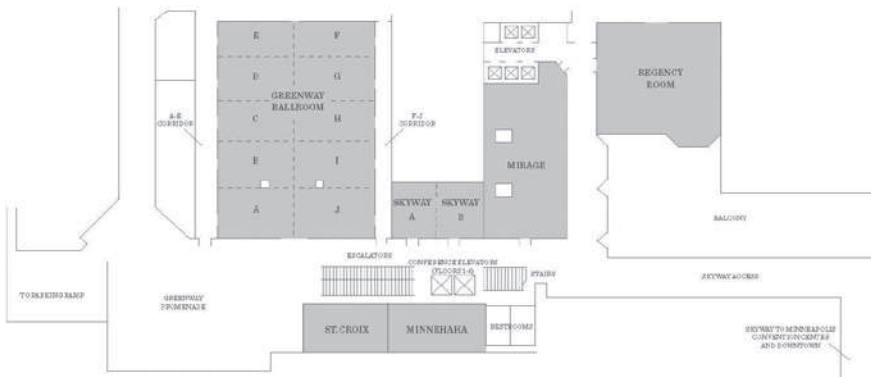
## Second Floor



## Fourth Floor



## Fifth Floor



Cover Photo: Claes Oldenburg and Coosje van Bruggen Spoonbridge and Cherry 1985–1988 aluminum, stainless steel, paint. Collection Walker Art Center Gift of Frederick R. Weisman in honor of his parents, William and Mary Weisman, 1988. Photo courtesy of Meet Minneapolis.

# Welcome to Minneapolis, MN!

## President's Message

### Welcome to Minneapolis!

Thank you very much for being a part of our AAEA Annual Meeting here in Minneapolis. The AAEA's *Culture of Engagement* and the dynamic nature of our meeting very much rest on your contributions of your work, your open and active conversation with others about their work, and your involvement in planning sessions and activities. The conversation builds here on pressing economic and policy issues in food, agriculture, the environment, natural resources, health, regional economics, and international development, and all the intersections of these areas with additional applied economics fields.

We are pleased to welcome our AAEA members, new and veteran, to this wonderful city. We have a great program planned. Our expanded *Meeting Mobile App* allows you great access to the program and planning tools to organize your time—and allows you to travel a bit more lightly if you have chosen to go green without a paper copy of the program.

Our meeting kicks off with pre-conferences and mentoring workshops on Saturday followed by *Networking Sunday*—packed with Section and Committee Meetings, first rounds of the Academic Bowl and of the Graduate Student Case Study and Extension Competitions, the Early Career Professionals Networking Reception, and Section/Committee Receptions. The *Keynote Address* at 6 pm features Brian Wansink bringing us his innovative thinking on research and public policy work at the intersection of behavioral economics and nutrition. The *Poster Reception* follows, allowing you to get a first look at all the posters and meet authors before flowing into the *Welcome Reception* to meet up with old friends and make new ones.

Monday begins with Barry Goodwin's *Presidential Address*, sharing his thoughts with us on the good, the bad, and the ugly in agricultural policy analysis. As you move into the *Concurrent Sessions*, expect to have to make some hard choices! The program features Invited Paper Sessions, Section Tracks, Selected Presentation Sessions, and Organized Symposia chock full on new work and engaging conversations about applied economics and policy. Posters and additional topics will be featured during *Networking Lunch Periods* on Monday and Tuesday. Coffee and tea will be on tap in the morning and again during a break in the afternoon to keep everyone going.

The *Academic Bowl Finals* are at 6 pm on Monday. We will honor and recognize the impressive work of AAEA members at the *Awards and Fellows Recognition Ceremony* at 6:30 pm on Monday. Receiving the highest recognition of Fellow at this meeting are B. Wade Brorsen, Robert P. King, John Loomis, and Thomas Reardon. Please give them a hearty congratulations when you see them throughout the meeting.

Conversation on economics and public policy are again a highlight of Tuesday's program with Kathy Segerson in her *Fellow's Address* focusing on her insights into the role of economics in interdisciplinary environmental policy debates. Jean Tirole's *Galbraith Forum Lecture* on intellectual property and public policy wraps up the program in the early evening on Tuesday, followed by the closing reception. A very full program of Concurrent Sessions and a Networking Lunch make for an exciting program throughout the day on Tuesday. Two great post-conferences are offered on Wednesday.

I am excited to meet you at our annual meeting and look forward to talking with you. We thank all of our members who gave their time to create our *Culture of Engagement* through organizing tracks and sessions, reviewing selected presentation abstracts, planning pre- and post-conference workshops, organizing student activities and competitions, and serving on committees to select award winners and Fellows. Thanks to all of the participants who have brought their work to Minneapolis to share with colleagues. And thanks to our AAEA Staff for providing excellent meeting development and management. All your efforts are critical to the success of our joint endeavor of creating a meeting space that supports and inspires our work and us.

Julie A. Caswell  
AAEA President



# Table of Contents

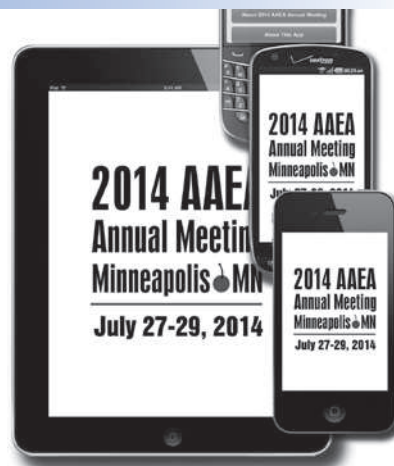
Hyatt Regency Minneapolis Floorplan .....	Inside Cover
Welcome to Minneapolis!.....	1
AAEA Leadership.....	3
Thank You to the Selected Presentations Committee.....	4
Meeting Information.....	5
Sponsors.....	5
Exhibitors.....	6
Undergraduate Recruitment Fair.....	7
Plenary Sessions .....	8
Speaker Series Events.....	10
Meeting Timeline.....	11
Reunions & Receptions.....	17
Professional Development Activities and Sessions.....	18
Posters.....	19
Types of Concurrent Sessions.....	33
Concurrent Sessions.....	34
Topical Index .....	111
Participant and Author Index.....	118

## Mobilize Your 2014 Annual Meeting Experience – DOWNLOAD THE APP!

The mobile app has many great features including:

- **My Schedule** - add sessions and events right onto your personal schedule.
- **Session Participants** - browse session participants including presenters, moderators, panelists, and more.
- **Twitter Feed** - to join the conversation, follow [@AAEA\\_Economics](#) and use #aaea2014.
- **Friends** - meet and connect with other Annual Meeting attendees.
- **All this and much more!**

Wi-Fi Network: **PSAV\_Event\_Solutions**  
Password: **AAEA2014**



#AAEA2014

**Follow AAEA on Twitter**

Share Your Annual Meeting Experience Using #AAEA2014 @AAEA\_ECONOMICS

# AAEA Leadership

## Agricultural & Applied Economics Association Executive Board

### President:

Julie A. Caswell, University of Massachusetts, Amherst

### President-Elect:

Barry Goodwin, North Carolina State University

### Past President:

Richard J. Sexton, University of California, Davis

### Past Presidents

William J. Spillman 1910-12	Ernest C. Young 1938
George F. Warren 1913	Irving G. Davis 1939
Daniel H. Otis 1914	Foster F. Elliot 1939
Andrew Boss 1915	Hugh B. Price 1940
Harcourt A. Morgan 1916	Murray R. Benedict 1941
Henry W. Jeffers 1917	George S. Wehrwein 1942
George A. Billings 1918	Sherman E. Johnson 1943
John R. Fain 1919	Eric Englund 1944
Henry C. Taylor 1920	Lawrence J. Norton 1945
Walter F. Handschin 1921	Frederic V. Waugh 1946
Benjamin H. Hibbard 1922	Asher Hobson 1947
Thomas P. Cooper 1923	William G. Murray 1948
Edwin G. Nourse 1924	Oris V. Wells 1949
Milburn L. Wilson 1925	Warren C. Waite 1950
Thomas N. Carver 1926	Forrest F. Hill 1951
John I. Falconer 1927	George H. Aull 1952
Lewis C. Gray 1928	Harry R. Weilman 1953
H.E. Erdman 1929	Thomas K. Cowden 1954
Harold C.M. Case 1930	Joseph Ackerman 1955
Oscar C. Stine 1931	Karl Brandt 1956
John D. Black 1932	H. Brooks James 1957
Howard R. Tolley 1933	Harry C. Trelogan 1958
William I. Meyers 1934	Raymond G. Bressler, Jr. 1959
Waldo E. Grimes 1935	Willard W. Cochrane 1960
Joseph S. Davis 1936	William H. Nicholls 1961
Oscar B. Jesness 1937	Bushrod W. Allin 1962

### Directors:

Michael Boland, University of Minnesota  
Hayley Chouinard, Washington State University  
Keith Coble, Mississippi State University  
Jayson Lusk, Oklahoma State University  
Scott Swinton, Michigan State University  
Dawn Thilmany McFadden, Colorado State University

George E. Brandow 1963	Lester V. Manderscheid 1989
Lowell S. Hardin 1964	Sandra S. Batie 1990
D. Gale Johnson 1965	Warren E. Johnston 1991
Kenneth L. Bachman 1966	Bruce R. Beattie 1992
Lawrence W. Witt 1967	James P. Houck 1993
C.E. Bishop 1968	Peter J. Barry 1994
Harold F. Breimyer 1969	Lawrence W. Libby 1995
Dale E. Hathaway 1970	Vernon Eidman 1996
Jimmye S. Hillman 1971	Ralph D. Christy 1997
Vernon W. Ruttan 1972	Walter J. Armbruster 1998
Emery N. Castle 1973	C. Richard Shumway 1999
Kenneth R. Tefertiller 1974	John M. Antle 2000
James Nielson 1975	Bruce L. Gardner 2001
James T. Bonnen 1976	Jean D. Kinsey 2002
Kenneth R. Farrell 1977	Susan Offutt 2003
R.J. Hildreth 1978	Jon A. Brandt 2004
Bernard F. Stanton 1979	Laurian J. Unnevehr 2005
Richard A. King 1980	Per Pinstrup-Andersen 2006
Luther G. Tweeten 1981	Steven T. Buccola 2007
G. Edward Schuh 1982	Otto C. Doering, III 2008
Leo C. Polopolus 1983	Richard E. Just 2009
Neil E. Harl 1984	Ron Mittelhammer 2010
C.B. Baker 1985	Thomas W. Hertel 2011
William G. Tomek 1986	Robert P. King 2012
Joseoh Havlicek, Jr. 1987	Richard J. Sexton 2013
Daniel I. Padberg 1988	

## American Journal of Agricultural Economics (AJAE)

### Editors:

Brian Roe, The Ohio State University  
Madhu Khanna, University of Illinois at Urbana-Champaign  
JunJie Wu, Oregon State University  
James Vercauteren, University of British Columbia

### Book Review Editor:

Michael Reed, University of Kentucky

## Choices Magazine

### Editors:

Mary Ahearn, USDA-Economic Research Service (Retired)  
James Novak, Auburn University

### Technical Editor:

Patricia Keough-Wilson, Plains Harvest Communications

## Applied Economics Perspectives and Policy (AEPP)

### Submitted Article Editors:

Joan Costa-i-Font, London School of Economics and Political Science  
Terrance Hurley, University of Minnesota

### Managing Editor:

Spiro Stefanou, The Pennsylvania State University

## Thank You to the Selected Presentations Committee

---

*AAEA would like to extend a special thank you to the Selected Presentations Committee for their efforts in organizing the sessions taking place here in Minneapolis. The committee, with the help of dozens of topic leaders and over three hundred reviewers, fielded nearly 900 abstracts to create the topically diverse, high quality sessions that will be presented over the course of the 2014 Annual Meeting.*

**Chair:** Peyton Ferrier, USDA-Economic Research Service

Jayson Lusk, Oklahoma State University, Board Liaison  
Kelly Cobourn, Virginia Polytechnic Institute and State University  
Carlos Carpio, Texas Tech University  
Luisa Menapace, University of Trento  
Jerome Dumortier, Indiana State University-Purdue University Indianapolis  
Gary Williams, Texas A&M University

**Topic Leaders:**

Alexander Saak, International Food Policy Research Institute  
Alicia Rosburg, University of Northern Iowa  
Alison Davis, University of Kentucky  
Anna D'Souza, USDA-Economic Research Service  
Ariun Ishdorj, Texas A&M University  
Brad Lubben, University of Nebraska-Lincoln  
Carlos Carpio, Texas Tech University  
Carola Grebitus, Arizona State University  
Chen Zhen, RTI International  
Collin Payne, New Mexico State University  
David Davis, South Dakota State University  
Dawn Thilmany McFadden, Colorado State University  
Elizabeth Marshall, USDA-Economic Research Service  
Elizabeth Yeager, Purdue University  
Emi Uchida, University of Rhode Island  
Hope Michelson, Columbia University  
Hunghao Chang, National Taiwan University  
Jaclyn Donna Kropp, University of Florida  
Jacob Ricker-Gilbert, Purdue University  
Jerome Dumortier, Indiana State University  
- Purdue University Indianapolis  
Joleen Hadrich, Colorado State University

Juan-Pablo Sesmero, Purdue University  
Kathryn Boys, Virginia Polytechnic Institute and State University  
Keith Evans, St. Lawrence University  
Laura McCann, University of Missouri  
Lisa Mancino, USDA-Economic Research Service  
Maoyang Fan, Ball State University  
Michael Delgado, Purdue University  
Mindy Mallory, University of Illinois at Urbana-Champaign  
Nathan Hendricks, Kansas State University  
Nick Parker, University of Wisconsin-Madison  
Rebecca Epanchin-Niell, Resource for the Future  
Sarah Low, USDA-Economic Research Service  
Senarath Dharmasena, Texas A&M University  
Subhra Bhattacharjee, Human Development Report Office, United Nations Development Program  
Tim Graciano, Ernst and Young  
Todd Kuethe, University of Illinois at Urbana-Champaign  
Wen You, Virginia Polytechnic Institute and State University  
Yanhong Jin, Rutgers University  
Yong Chen, Oregon State University  
Younjun Kim, Iowa State University

Thank you to all the 2014 AAEA Annual Meeting reviewers! This year, AAEA had over 300 Selected Presentation reviewers. The 2014 Annual Meeting would not be possible without the help of these volunteers.

This year, AAEA recruited volunteer moderators for Selected Presentation Paper sessions. Building on the Culture of Engagement discussed in AAEA President, Julie Caswell's, January column in *The Exchange*, we asked that these moderators actively foster discussion during their session. Thank you to all of the volunteer moderators!

# Meeting Information

## Registration Desk Hours

Hyatt Regency, Nicollet Promenade, Main Level

Saturday, July 26, 4:00 pm – 7:00 pm

Sunday, July 27, 7:30 am – 7:30 pm

Monday, July 28, 7:30 am – 5:00 pm

Tuesday, July 29, 7:30 am – 4:00 pm

## Wi-Fi Access

AAEA is providing free Wi-Fi access at the Hyatt Regency for all 2014 AAEA Annual Meeting attendees.

Wi-Fi Network: PSAV\_Event\_Solutions

Network Password: AAEA2014

## Accessibility

In accordance with the Americans with Disabilities Act, please inform an AAEA staff member if you need special assistance. Staff members are available on site at the Registration Desk to assist you.

## Guests

Guests must be registered in order to attend any and all meeting functions, including the Welcome and Closing Receptions, plenary sessions, and all concurrent sessions. Guests include any interested party not professionally in the field of agricultural economics or a related discipline. Children under the age of 16 may attend the meeting for free and do not need to register as a guest.

# Sponsors

## Thank you!



### CHS Foundation

- General



### Farm Foundation

- GSS (Graduate Student Section) Extension Competition
- AEM/GSS (Agribusiness Economics and Management Section/Graduate Student Section) Case Study Competition



### USDA-Economic Research Service

- AAEA Galbraith Forum

## Taping of Sessions

Session content is copyright-protected by AAEA. Recording of any session without the consent of AAEA is prohibited. Any taping done with the consent of the appropriate association is for personal use only and cannot be reproduced or distributed.

## Tickets

Tickets are required for all speaker series luncheons and banquets, as well as other special events. A limited number of tickets may be available for sale on site. If available, tickets will be sold at the registration desk up until the day before the event. No tickets will be sold on the day of the event.

AAEA is committed to the "True Cost Pledge." The association attests that the fee associated with each event is the true cost of the price to cover that event.

## Association Photographer

A professional photographer will be on site at the Annual Meeting taking photos which may be used in future promotional materials for AAEA. If you prefer that you are not included in these photos, please notify the photographer.



### National Crop Insurance Services (NCIS)

- COSBAE/CWAE (Committee on the Opportunities and Status of Blacks in Agricultural Economics Section/Committee on Women in Agricultural Economics Section) Luncheon
- Extension Section



### AgStar

- General

## Exhibitors

### AgEcon Search

AgEcon Search is a free, open access repository of full-text scholarly literature in agricultural and applied economics, including: working papers, conference papers and journal articles. Stop by to learn how you can help us grow.



### Center for Agricultural and Rural Development

The Center for Agricultural and Rural Development (CARD) was established to address the issues and unintended consequences of agricultural policies. In the last 50 years, CARD has become one of the most well-known agricultural policy institutes in the United States for conducting nonpartisan public policy and economic research on agricultural, environmental, and food issues.



### Oxford University Press

Oxford University Press USA is the US branch of Oxford University Press in Oxford, England (OUP UK), which is a department of Oxford University and is the oldest and largest continuously operating university press in the world.



### Purdue University

Purdue University has one of the best colleges of agriculture in the nation and the world. The College of Agriculture was recently ranked 6<sup>th</sup> in the world by QS World University Rankings. As the Indiana land-grant institution, we are committed to providing exceptional education for our students; discovering knowledge that stretches the frontiers of science and provides solutions to societal challenges; and, through Purdue Extension, helping the people of Indiana, the nation and the world improve their lives and livelihoods.



### The Council on Food, Agricultural, and Resource Economics (C-FARE)

The Council on Food, Agricultural, and Resource Economics (C-FARE) is a non-profit organization dedicated to strengthening the national presence of the agricultural economics profession. C-FARE's governing board includes prominent agricultural economists representing a wide range of public and private sector interests.



### University of Missouri

The College of Agriculture, Food and Natural Resources at the University of Missouri offers graduate students, undergraduate students, producers, and industry professionals real-world future market trading experiences through, Real Money: Speculative Trading for Beginners. This online course focuses on investment, speculation and hedging to assist with risk management decisions. Sign up today for this experiential learning opportunity and invest real money into a pool and have first-hand experience with assisting and recommending trades.



### USDA-Economic Research Service

The ERS mission is to inform and enhance public and private decision making on economic and policy issues related to agriculture, food, the environment, and rural development. With over 300 employees, The Economic Research Service is a primary source of economic information and research in the U.S. Department of Agriculture.



### USDA-National Agricultural Statistics Service

USDA, National Agricultural Statistics Service (NASS) disseminates data on every facet of U.S. agriculture. The agency conducts hundreds of surveys and issues 400 reports annually. NASS also conducts the Census of Agriculture every 5 years, providing the only source of detailed agricultural data for every county in the nation. NASS reports are available at [www.nass.usda.gov](http://www.nass.usda.gov).





## Undergraduate Recruitment Fair

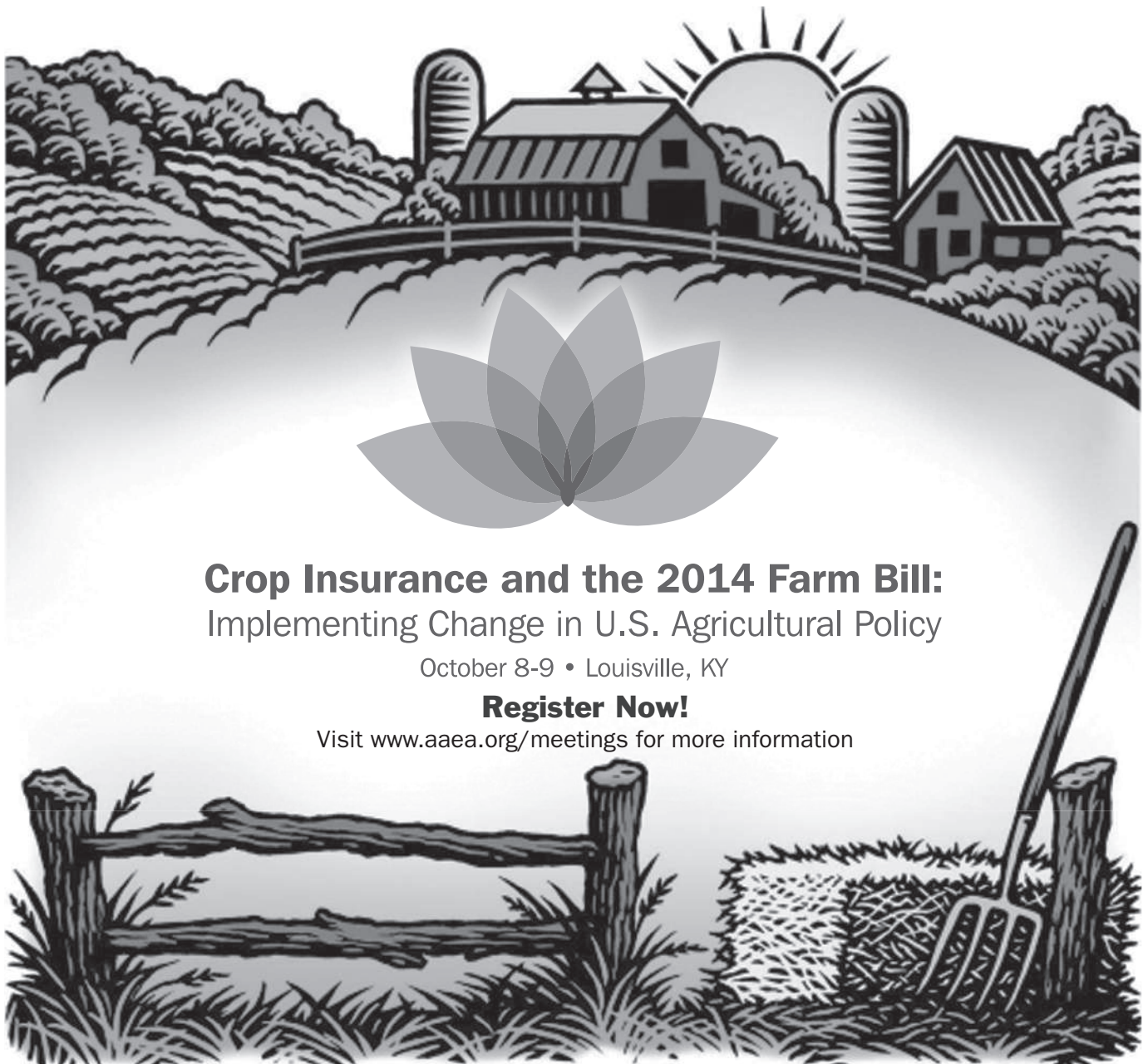
Monday, July 28, 8:00 am – 4:00 pm

*Pre-function space outside of Skyway and St. Croix rooms, Second Level*

The Undergraduate Recruitment Fair gives undergraduate students who are in Minneapolis a chance to meet and interact with academic departments from around the country that have graduate programs in agricultural and applied economics. Be sure to stop and visit with representatives from these universities in between rounds of the Academic Bowl.

### Participating Organizations Include:

- University of Arkansas
- University of Georgia
- Oklahoma State University
- Purdue University
- Texas A&M University
- University of Kentucky



## Crop Insurance and the 2014 Farm Bill: Implementing Change in U.S. Agricultural Policy

October 8-9 • Louisville, KY

**Register Now!**

Visit [www.aea.org/meetings](http://www.aea.org/meetings) for more information