

Final Program

2013 AAEA & CAES Joint Annual Meeting



AAEA & CAES
Joint Annual Meeting
AUGUST 4-6

www.aaea.org/2013am

2013 **DC**
Washington

Welcome to DC

Thanks very much for joining us here in Washington, DC. We are pleased to welcome our AAEA members, new and veteran, to this beautiful city. We have a great program planned for you, with sessions addressing topics of interest for everyone and plenty of opportunities to reconnect with old friends and make new professional contacts.

Looking through the program for the first time after picking up my registration materials is something I enjoy every year. As always, when you start to page through this year's program you'll find a full slate of concurrent sessions filled with organized symposia and invited and selected paper sessions. You'll also find plenary sessions each day that address topics covering a wide range of issues. I'll highlight several parts of the program that you might overlook.

Sunday is a day for networking and for getting involved. Most of our Section and committee meetings take place throughout the day, and a few sections have receptions in the late afternoon. We also have our third annual Early Career Professionals Networking Reception and the new employer showcase taking place in the afternoon. In the evening, the welcome reception will follow Sendhil Mullainathan's Keynote Address.

The format for posters has changed slightly from recent years. One set of 100 posters will be on display during the welcome reception through Monday in the exhibit hall. A second set of 100 posters will be on display in the exhibit hall on Tuesday. Please take some time to visit the posters during your down time.

The Awards and Fellows Recognition Ceremony is always a highlight of the meeting. Its format will be similar to that in past years; however, this year the new Fellows have prepared brief acceptance speeches. The 2013 Fellows are: Bruce Babcock, Jeffrey Dorfman, Scott Irwin and Keijiro Otsuka. The AAEA Fellow Award is the highest honor bestowed by our association, so please congratulate them when you see them at other events or program sessions. We will also be chartering two new AAEA Trust funds: the Uma Lele Special Purpose Fund and the Jon Brandt Special Purpose Fund.

Again this year, breakfast on Monday and Tuesday and lunch on Tuesday will be available for all registrants. During the lunch on Tuesday, we have a special panel discussion that will be moderated by Susan Offutt titled "Grappling with Federal and State Budget Challenges". The panel features Bill Hoagland from the Center for Bipartisan Policy, Andy Morton from the House Budget Committee, and Barry Anderson from the National Governors Association.

The aforementioned panel discussion is the capstone of a Beltway Track that I've created to highlight our presence in DC. You will find the Beltway Track listed later in the program along with the other Section Tracks. The Track includes a session highlighting new NIFA initiatives and a session featuring Mark Doms and Clayton Yeutter who will be discussing economic policies and priorities. I'd like to specifically thank Sonny Ramaswamy, Rob King, Susan Offutt, and Sally Thompson for helping to organize these special sessions.

I want to thank the many volunteers who organized sessions, reviewed selected presentation abstracts, planned pre- and post-conference workshops, organized student activities and competitions, and served on committees to select award winners and Fellows. Their efforts are critical to the success of this meeting.

I hope that your experience the next few days will be both professionally enriching and personally enjoyable. I also hope that you'll carry a sense of enthusiasm and renewal home with you from this great summer gathering of agricultural and applied economists.

Richard J. Sexton
AAEA President



Welcome to DC

Welcome to Washington and the Joint Annual Meeting of AAEA and CAES! This is an exciting year to attend the meetings, and not just because of the locale. Building on past joint meetings, we have moved forward to offer fully integrated selected paper and poster sessions. This means CAES and AAEA members will be presenting alongside each other in the selected paper and poster sessions. In addition to this, CAES will have standalone Track Sessions related to a number of interesting and relevant issues. CAES is also trying something new by offering three Track Sessions styled after *TED* talks; these sessions will include talks by leading and emerging thinkers in the fields of food, agricultural and resource economics.

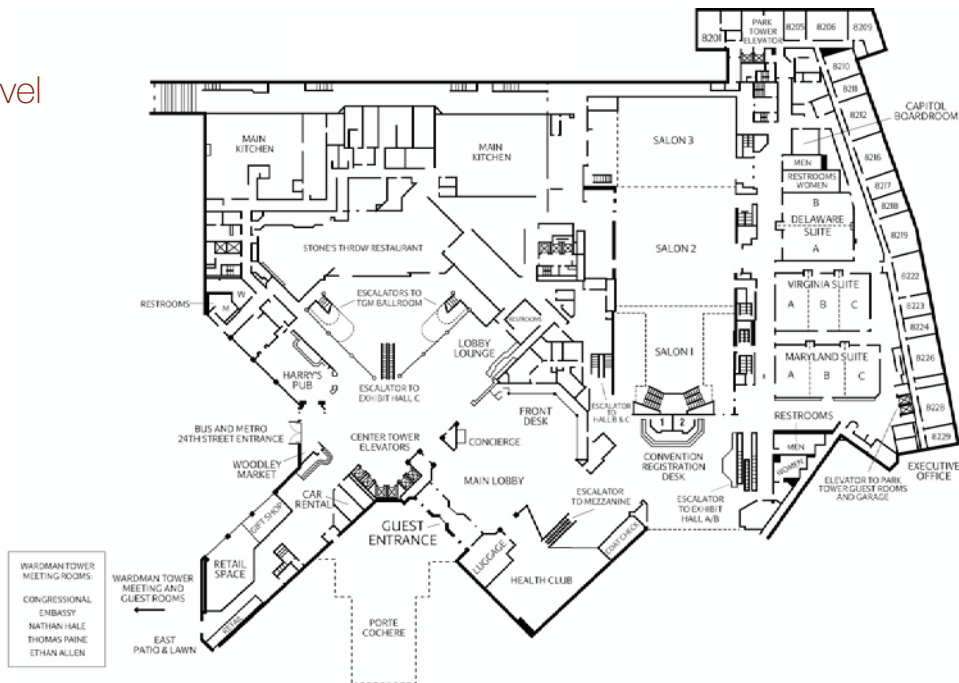
The CAES Executive has developed a number of initiatives to enhance our member services and to help move the Society forward. As such, I would encourage you to attend the Society's business meeting and let us know your thoughts on these issues. I would also encourage you to attend the CAES Fellows Address, given this year by Fellow Richard Gray on "Funding Systems for Agricultural Research" and the CAES Presidential Address by our incoming President, J.P. Gervais on "Growing Complexity and Greater Sophistication in Agriculture".

Washington DC is a region brimming with attractions, so be sure to take the time to enjoy what Washington has to offer. But don't forget to attend the CAES Awards Banquet! The Banquet will be a place to meet and greet old and new friends. It will also be the time when we recognize members' achievements, including the Undergraduate Book Prizes, Masters Thesis awards, and other awards in recognition of long standing contributions to the profession. So be sure to come along and help us honor their success. Like past joint meetings, this year's Annual Meeting offers a great way to renew old friendships, network and think more about pressing and relevant issues. I look forward to seeing you in Washington!

John Cranfield
CAES President



Lobby Level



Mezzanine Level

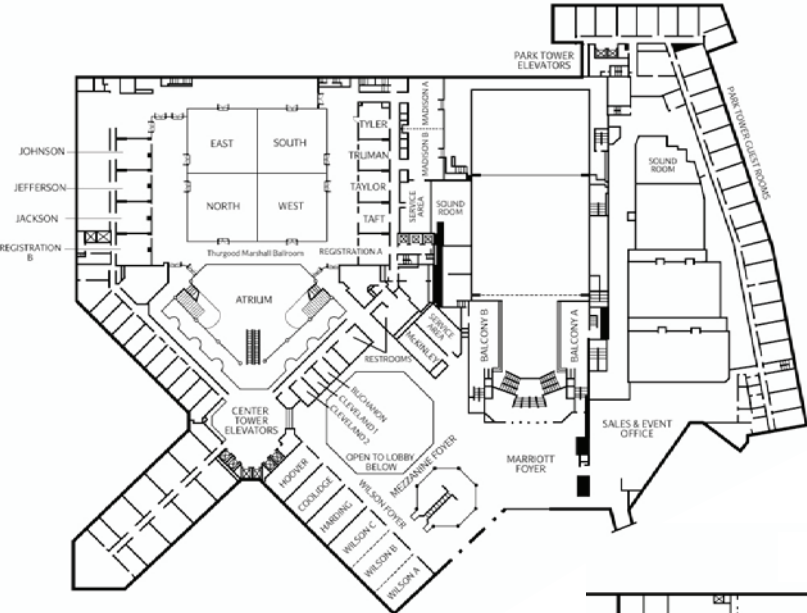


Exhibit Level

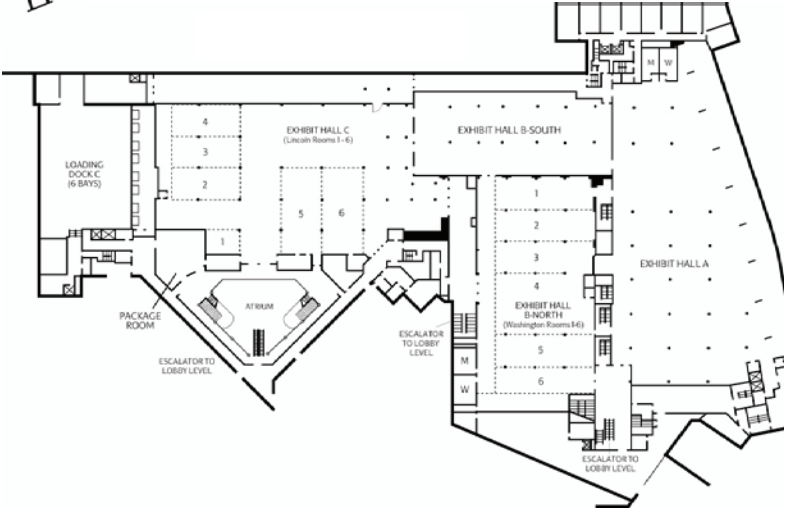


Table of Contents

Welcome to DC.....	Inside Cover
Maps	2
Meeting Information.....	4
AAEA Leadership	5
CAES Leadership	6
Thank You to the Selected Presentations Committee	7
Sponsors	8
Exhibitors.....	9
Undergraduate Recruitment Fair	10
Plenary Sessions	11
Speaker Series Events	13
Beltway Track Session	14
Reunions & Receptions	16
Meeting Schedule.....	17
Posters	23
Concurrent Sessions	38
Topical Index.....	133
Author Index	140

Enhance Your Annual Meeting Experience

Download the 2013 Joint Annual Meeting app to your iPhone, iPad, Blackberry or Android.

- ★ Add sessions to your personal schedule
- ★ Browse speaker profiles
- ★ Join in on the live Twitter feed, follow @AAEA_Economics and use hashtag #aaea2013
- ★ Connect with other Joint Annual Meeting attendees

<http://m.core-apps.com/aaea2013>



Meeting Information

Registration Desk Hours

Marriott Wardman Park, Lobby Level, Convention Registration Desk

Saturday, August 3, 4:00 pm–7:00 pm

Sunday, August 4, 7:30 am–7:00 pm

Monday, August 5, 7:30 am–5:00 pm

Tuesday, August 6, 7:30 am–4:00 pm

If you have any questions, please feel free to visit the Registration Desk, or contact AAEA staff at (202) 745-2117.

Accessibility

In accordance with the Americans with Disabilities Act, please inform an AAEA staff member if you need special assistance. Staff members are available on site at the Registration Desk to assist you.

Guests

Guests must be registered in order to attend any and all meeting functions, including the Welcome and Closing Receptions, plenary sessions, and all concurrent sessions. Guests include any interested party not professionally in the field of agricultural economics or a related discipline. Children under the age of 16 may attend the meeting for free and do not need to register as a guest.

Taping of Sessions

Session content is copyright-protected by AAEA. Recording of any session without the consent of AAEA is prohibited. Any taping done with the consent of the appropriate association is for personal use only and cannot be reproduced or distributed.

Tickets

Tickets are required for all speaker series luncheons and banquets, as well as other special events. A limited number of tickets may be available for sale on site. If available, tickets will be sold at the registration desk up until the day before the event. No tickets will be sold on the day of the event.

AAEA is committed to the “True Cost Pledge.” The association attests that the fee associated with each event is the true cost of the price to cover that event.

Association Photographer

A professional photographer will be on site at the Joint Annual Meeting taking photos which may be used in future promotional materials for AAEA. If you prefer that you are not included in these photos, please notify the photographer.

CHOICES

The magazine of food, farm, and resource issues



www.choicesmagazine.org
twitter.com/Choices_AAEA

Choices is a free online peer-reviewed magazine published by the AAEA for readers interested in the policy and management of agriculture, food issues, natural resources, rural communities, and the environment.

Visit our website to access free articles, view webinars, and subscribe for content alerts or to submit manuscripts for review or proposals for themes.

AAEA Leadership

Agricultural & Applied Economics Association Executive Board

President: Richard J. Sexton, University of California, Davis

President-Elect: Julie A. Caswell, University of Massachusetts Amherst

Past President: Robert P. King, University of Minnesota

Directors:

Keith H. Coble, Mississippi State University

Jayson Lusk, Oklahoma State University

Lori Lynch, University of Maryland

GianCarlo Moschini, Iowa State University

Scott M. Swinton, Michigan State University

Dawn Thilmany McFadden, Colorado State University

PAST PRESIDENTS

William J. Spillman, 1910-12

George F. Warren, 1913

Daniel H. Otis, 1914

Andrew Boss, 1915

Harcourt A. Morgan, 1916

Henry W. Jeffers, 1917

George A. Billings, 1918

John R. Fain, 1919

Henry C. Taylor, 1920

Walter F. Handschin, 1921

Benjamin H. Hibbard, 1922

Thomas P. Cooper, 1923

Edwin G. Nourse, 1924

Milburn L. Wilson, 1925

Thomas N. Carver, 1926

John I. Falconer, 1927

Lewis C. Gray, 1928

H.E. Erdman, 1929

Harold C.M. Case, 1930

Oscar C. Stine, 1931

John D. Black, 1932

Howard R. Tolley, 1933

William I. Meyers, 1934

Waldo E. Grimes, 1935

Joseph S. Davis, 1936

Oscar B. Jesness, 1937

Ernest C. Young, 1938

Irving G. Davis, 1939

Foster F. Elliot, 1939

Hugh B. Price, 1940

Murray R. Benedict, 1941

George S. Wehrwein, 1942

Sherman E. Johnson, 1943

Eric Englund, 1944

Lawrence J. Norton, 1945

Frederic V. Waugh, 1946

Asher Hobson, 1947

William G. Murray, 1948

Oris V. Wells, 1949

Warren C. Waite, 1950

Forrest F. Hill, 1951

George H. Aull, 1952

Harry R. Weilman, 1953

Thomas K. Cowden, 1954

Joseph Ackerman, 1955

Karl Brandt, 1956

H. Brooks James, 1957

Harry C. Trelogan, 1958

Raymond G. Bressler, Jr., 1959

Willard W. Cochrane, 1960

William H. Nicholls, 1961

Bushrod W. Allinc, 1962

George E. Brandow, 1963

Lowell S. Hardin, 1964

D. Gale Johnson, 1965

Kenneth L. Bachman, 1966

Lawrence W. Witt, 1967

C.E. Bishop, 1968

Harold F. Breimyer, 1969

Dale E. Hathaway, 1970

Jimmye S. Hillman, 1971

Vernon W. Ruttan, 1972

Emery N. Castle, 1973

Kenneth R. Tefertiller, 1974

James Nielson, 1975

James T. Bonnen, 1976

Kenneth R. Farrell, 1977

R.J. Hildreth, 1978

Bernard F. Stanton, 1979

Richard A. King, 1980

Luther G. Tweeten, 1981

G. Edward Schuh, 1982

Leo C. Polopolus, 1983

Neil E. Harl, 1984

C.B. Baker, 1985

William G. Tomek, 1986

Joseoh Havlicek, Jr., 1987

Daniel I. Padberg, 1988

Lester V. Manderscheid, 1989

Sandra S. Batie, 1990

Warren E. Johnston, 1991

Bruce R. Beattie, 1992

James P. Houck, 1993

Peter J. Barry, 1994

Lawrence W. Libby, 1995

Vernon Eidman, 1996

Ralph D. Christy, 1997

Walter J. Armbruster, 1998

C. Richard Shumway, 1999

John M. Antle, 2000

Bruce L. Gardner, 2001

Jean D. Kinsey, 2002

Susan Offutt, 2003

Jon A. Brandt, 2004

Laurian J. Unnevehr, 2005

Per Pinstrup-Andersen, 2006

Steven T. Buccola, 2007

Otto C. Doering, III, 2008

Richard E. Just, 2009

Ron Mittelhammer, 2010

Thomas W. Hertel, 2011

Robert P. King, 2012

Richard J. Sexton, 2013

American Journal of Agricultural Economics (AJAE)

Editors:

David Hennessy, Iowa State University

J. Edward Taylor, University of California, Davis

Brian E. Roe, The Ohio State University

Madhu Khanna, University of Illinois at Urbana-Champaign



AAEA Leadership

Applied Economic Perspectives and Policy (AEPP)

Editors:

Joan Costa-i-Font, London School of Economics and Political Science

Terry Hurley, University of Minnesota

Ashok Mishra, Louisiana State University

Timothy Park, USDA-Economic Research Service

Managing Editor: Spiro Stefanou, Pennsylvania State University

Choices Magazine

Editors:

James Novak, Auburn University

Mary Ahearn, USDA-Economic Research Service

Technical Editor: Patricia Keough-Wilson, Plains Harvest Communications

CAES Leadership

Canadian Agricultural Economics Society Executive Council

President: John Cranfield, University of Guelph

President-Elect: JP Gervais, Farm Credit Canada

Past President: Al Mussell, George Morris Centre

Secretary/Treasurer: Tabitha Rich, Agriculture and Agri-Food Canada

Councillors:

Brad Stennes, Pacific Forestry Centre

Stavroula Malla, University of Lethbridge

Brandon Schaufele, University of Ottawa

Chad Lawley, University of Manitoba

Crina Viju, Carleton University

Margaret Zafiriou, Agriculture and Agri-Food Canada

Arden Esqueda, Agriculture and Agri-Food Canada

Sumeet Gulati, University of British Columbia

Scott Jeffrey, University of Alberta

Executive Director: Valerie Johnson

IAAE Representative: Terry S. Veeman, University of Alberta

Canadian Journal of Agricultural Economics (CJAE)

Editors:

James R. Wilson, University of Quebec at Rimouski

Glenn Fox, University of Guelph

Wuyang Hu, University of Kentucky

Bishnu Saha, Statistics Canada



Thank You to the Selected Presentations Committee

AAEA would like to extend a special thank you to the Selected Presentations Committee for their efforts in organizing the sessions taking place here in DC. The committee, with the help of dozens of topic leaders and numerous reviewers, fielded a record number of abstracts to create the topically diverse, high quality sessions that will be presented over the course of the Joint Annual Meeting.

Chair: Jeffrey Reimer, Oregon State University

Board Liaison: Jayson Lusk, Oklahoma State University

Jennifer Alix-Garcia, University of Wisconsin, Madison

Kelly Cobourn, Boise State University

Steven Yen, University of Tennessee

Peyton Ferrier, USDA-Economic Research Service

Luisa Menapace, University of Trento

Topic Leaders:

Aaron Johnson, University of Idaho

Anton Bekkerman, Montana State University

Ariun Ishdorj, Texas A&M University

Ben Schwab, CGIAR

Carlos Carpio, Clemson University

Carola Grebitus, Arizona State University

Chen Zhen, RTI International

Christiane Schroeter, Polytechnic State University

David Davis, South Dakota State University

Dawn Thilmany McFadden, Colorado State University

Elizabeth Yeager, Purdue University

Emi Uchida, University of Rhode Island

Eric Belasco, Montana State University

Greg Colson, University of Georgia

Hunghao Chang, National Taiwan University

Jay Corrigan, Kenyon College

Jerome Dumortier, Indiana State University- Purdue University

Karina Schoengold, University of Nebraska, Lincoln

Kathryn Boys, Virginia Tech

Kelly Grogan, University of Florida

Klaus Moeltner, Virginia Tech

Laura McCann, University of Missouri

Marco Costanigro, Colorado State University

Matt Andersen, University of Wyoming

Nick Kuminoff, Arizona State University

Nick Parker, University of Wisconsin, Madison

Norbert Wilson, Auburn University

Pam Jagger, University of North Carolina

Sebastien Pouliot, Iowa State University

Tian Xia, Kansas State University

Tim Graciano, USDA-Economic Research Service

Todd Kuethe, USDA-Economic Research Service

Tracy Boyer, Oklahoma State University

Trent Teegerstrom, University of Arizona

Wen You, Virginia Tech

Wuyang Hu, University of Kentucky

Ximing Wu, Texas A&M University

Yanhong Jin, Rutgers University

Yong Chen, Oregon State University

Zhengfei Guan, University of Florida



Sponsors



- AAEA Student & Early Career Professional Travel Grants
- Mentorship Workshop
- AAEA Travel Grants for Economists from Least Developed Countries
- AARES-AAEA Young Professional Exchange Program (Heading North/Heading South)
- Post-conference Workshop: Best Practices of the USDA NIFA Projects



- Extension Section Reception



- Extension Section Reception



- COSBAE Reception
- Extension Section Reception



- AAEA Galbraith Forum



- Extension Section Reception



- China Section Business Meeting and Reception

APPLIED ECONOMIC PERSPECTIVES AND POLICY

Submissions welcome!

The editors of *AEPP* invite submissions from interested authors. *AEPP* will publish high quality, integrative research in a forum that will appeal to broad audiences with an interest in agricultural and applied economics. *AEPP* aims to publish contributions to applied economics across a range of issues, including agriculture, development, energy and education, food and consumer. It will also publish commissioned featured articles focusing on the synthesis and integration of applied research and on emerging research agendas.

If you are interested in submitting your work to *AEPP*, please find more information at www.aepp.oxfordjournals.org



Exhibitors

AAAS Science & Technology Policy Fellowships

One-year fellowships that seek to foster scientifically informed, evidence-based policy and practice by engaging scientists and engineers from a broad range of disciplines and career stages. A doctoral level degree (or MS in engineering) is required.



AgEcon Search

AgEcon Search is a free, open access repository of full-text scholarly literature in agricultural and applied economics, including: working papers, conference papers and journal articles. Stop by to learn how you can help us grow.



Bureau of Economic Analysis

The Bureau of Economic Analysis (BEA) promotes a better understanding of the U.S. economy by providing the timeliest, relevant, and accurate economic accounts data in an objective and cost-effective manner.



The Council on Food, Agricultural, and Resource Economics

The Council on Food, Agricultural, and Resource Economics (C-FARE) is a non-profit organization dedicated to strengthening the national presence of the agricultural economics profession. C-FARE's governing board includes prominent agricultural economists representing a wide range of public and private sector interests.



International Food Policy Research Institute

The International Food Policy Research Institute (IFPRI) seeks sustainable solutions for ending hunger and poverty. IFPRI is one of 15 centers supported by the Consultative Group on International Agricultural Research (CGIAR), an alliance of 64 governments, private foundations, and international and regional organizations.



Nautilytics

Nautilytics develops software that enables businesses to understand and make informed decisions from complex and dynamic data. Our team of economists, software developers, designers, and usability experts specialize in easy-to-use high impact visualizations.



Oxford University Press

Oxford University Press USA is the US branch of Oxford University Press in Oxford, England (OUP UK), which is a department of Oxford University and is the oldest and largest continuously operating university press in the world.



Purdue University

Purdue University has one of the best colleges of agriculture in the nation and the world. As a land-grant institution, we are committed to providing exceptional education for our students; discovering knowledge that stretches the frontiers of science and provides solutions to societal challenges; and, through Purdue Extension, helping the people of Indiana, the nation and the world improve their lives and livelihoods.



University of Illinois farmdoc/FAST Tools

Farmdoc, www.farmdoc.illinois.edu, is a website maintained by members of the Department of Agricultural and Consumer Economics at the University of Illinois. The goal of the farmdoc project is to improve farm decision-making under risk through education and research. The farmdoc website provides comprehensive and integrated risk management information and analysis. Subject matter sections cover finance, marketing and outlook, management, law and taxation, and policy.



USDA-Economic Research Service

The ERS mission is to inform and enhance public and private decision making on economic and policy issues related to agriculture, food, the environment, and rural development. With over 300 employees, The Economic Research Service is a primary source of economic information and research in the U.S. Department of Agriculture.



Exhibitors

USDA-Foreign Agricultural Service

The USDA Foreign Agricultural Service (FAS) links U.S. agriculture to the world to enhance export opportunities and global food security. FAS's core functions are carried out by a cadre of highly professional staff stationed in Washington, DC, and in 95 overseas field offices in 75 countries. FAS expands and maintains access to foreign markets for U.S. agricultural products by removing trade barriers and enforcing U.S. rights under existing trade agreements.

FAS also partners with 75 cooperator groups representing a cross-section of the U.S. food and agricultural industry and manages a toolkit of market development programs to help U.S. exporters develop and maintain markets for hundreds of products. FAS analysts provide objective intelligence on foreign market opportunities, prepare production forecasts, assess export marketing opportunities, and track changes in policies affecting U.S. agricultural exports and imports. FAS also leads USDA's efforts to help developing countries improve their agricultural systems and build their trade capacity.



Undergraduate Recruitment Fair

Monday, 8:00am – 4:00pm

Marriott Wardman Park, Mezzanine Level, Thurgood Foyer

The Undergraduate Recruitment Fair gives undergraduate students who are in DC to participate in SS-AAEA events the chance to meet and interact with academic departments from around the country that have graduate programs in agricultural and applied economics. Be sure to stop and visit with representatives from these universities in between rounds of the Academic Bowl.

Participating Organizations Include:

- University of Arkansas
- Purdue University
- Oklahoma State University
- Texas A&M University



Plenary Sessions

CAES Presidential Address, Fellows Address & Annual Business Meeting

Sunday, 3:30 pm–6:00 pm

Marriott Wardman Park, Lobby Level, Delaware A/B

PRESIDENTIAL ADDRESS



Jean-Philippe Gervais

Farm Credit Canada

“Growing Complexity and Greater Sophistication in Agriculture”

J. P. Gervais is the Chief Agricultural Economist at Farm Credit Canada (FCC) where he provides business and economic analysis for FCC strategy and leverage economic insights with customers, industry stakeholders and the media. Prior to joining FCC in 2010, he was a Professor in the Department of Agricultural Economics at North Carolina State. He also taught in the Department of Agricultural Economics at Laval University where he held the Canada Research Chair in Agri-industries and International Trade. J.P. is currently President-elect of the Canadian Agricultural

Economics Society. He obtained his PhD in economics from Iowa State University in 1999.

FELLOWS ADDRESS



Richard Gray

University of Saskatchewan

“Funding Systems for Agricultural Research”

Richard S. Gray is a Professor in the Department of Bioresource Policy, Business and Economics at University of Saskatchewan and holds the Canadian Grain Policy Chair. He has served as Department Head and President of the CAES. From 2004 until March of this year, Richard led the *Canadian Agricultural Innovation Regulation Network* (please see <http://www.ag-innovation.usask.ca>). He became a Fellow of the Canadian Agricultural Economics Society in 2011.

Richard has a broad range of research interests many covering many aspects of agricultural policy. He has published in the areas of agricultural trade, agricultural marketing, environmental economics, and more recently, research and innovation policy.

He has studied a number of national crop research systems, with particular interest in the role of the public, producer and private sectors, in research funding, governance and intellectual property management. He is particularly interested in how public-producer-private partnerships, can help overcome market failures in research.

Keynote Address

Sunday, 6:00 pm–7:00 pm

Marriott Wardman Park, Lobby Level, Salon 2



Sendhil Mullainathan

Harvard University

“The Behavioral Economics of Scarcity: Why Having Too Little Means so Much”

Sendhil Mullainathan is a Professor of Economics at Harvard University and Founder of ideas42, a non-profit organization devoted to taking insights about people from behavioral economics and using it to create novel policies, interventions, and products. He is also a Research Associate at the National Bureau of Economic Research, a Founding Member of the Poverty Action Lab, and a Board Member of the Bureau of Research in the Economic Analysis of Development.

Plenary Sessions

AAEA Presidential Address

Monday, 8:30 am–9:30 am

Marriott Wardman Park, Lobby Level, Salon 2



Julie Caswell
University of Massachusetts Amherst
“Certifying the Quality of Applied Economics”

Julie Caswell’s work focuses on understanding the operation of domestic and international food systems, analyzing how well they work, and evaluating how government policy affects their operation and performance. Her particular interest is in the economics of food quality, especially the quality attributes of safety and nutrition. How are markets for food safety and nutrition developing given increased consumer demand for safer, more nutritious products; manufacturers and retailers’ efforts to meet this demand; and increased regulatory activity by national governments to assure food quality? She is also interested in the economics of certification, traceability, and labeling for quality attributes. Examples of her work include how to prioritize the importance of different foodborne risks, whether regulatory programs such as Hazard Analysis at Critical Control Points (HACCP) will enhance food safety at a reasonable cost, how benefit and risk information can be balanced and effectively communicated to consumers, and how international trade agreements influence food quality.

AAEA Fellows Address

Tuesday, 8:30 am–9:30 am

Marriott Wardman Park, Lobby Level, Salon 2



David Zilberman
University of California, Berkeley
“Sustainable Development: Implications to Applied Economics”

David Zilberman is a Professor and holds the Robinson Chair in the Department of Agricultural and Resource Economics at the University of California at Berkeley. Dr. Zilberman’s areas of expertise include agricultural and environmental policy, marketing, risk management, the economics of innovation, natural resources, water, biotechnology, and biofuels. He is a Fellow of the Agricultural & Applied Economics Association (AAEA) and the Association of Environmental and Resource Economists, and he has received the AAEA Publication of Enduring Quality Award (2005, 2010) and the UNESCO International Cannes Prize for Water and the Economy (2000). He has published 250 refereed articles in *Science*, the *American Economic Review*, *Econometrica*, the *American Journal of Agricultural Economics*, the *Journal of Environmental Economics and Management*, among others, and has edited 13 books. He has served as a consultant to the U.S. Environmental Protection Agency, the U.S. Department of Agriculture, the World Bank, the Food and Agriculture Organization, and the Organisation for Economic Co-operation and Development. He received his BA in Economics and Statistics at Tel Aviv University, Israel, and his PhD at the University of California at Berkeley.

AAEA Galbraith Forum

Tuesday, 6:00 pm–7:00 pm

Marriott Wardman Park, Lobby Level, Salon 2



Martin Weitzman
Harvard University
“Why is the Economics of Climate Change so Difficult and Controversial?”

Martin L. Weitzman is Professor of Economics at Harvard University. Previously he was on the faculties of MIT and Yale University. He has been elected as a fellow of the Econometric Society and the American Academy of Arts and Sciences. He has published widely in many leading economic journals and written two books. Weitzman’s interests in economics are broad and he has served as consultant for several well-know organizations. His current research is focused on environmental economics, including climate change, the economics of catastrophes, cost-benefit analysis, long-run discounting, green accounting, and comparison of alternative instruments for controlling pollution.

Speaker Series Events

COSBAE/CWAE Speaker Series & Luncheon

Monday, 11:30 am–1:00 pm

Marriott Wardman Park, Lobby Level, Balcony B

*This is a ticketed event. The cost to attend is \$65.**



Connie Tipton

International Dairy Foods Association

“Unshackling the US Dairy Industry to Feed the World”

During her career of more than 30 years with IDFA, Connie Tipton has held a leadership role in virtually all areas of the association, including legislative and international affairs, economic policy analysis, public relations, marketing, education and training, and trade shows. She helped to launch the annual Capitol Hill Ice Cream Party and encouraged legislation that created the famous “Milk Mustache” campaign. Tipton also led successful legislative campaigns to lessen government intervention in markets that reduces growth in the dairy industry globally.

Extension Section Speaker Series & Luncheon

Monday, 11:30 am–1:00 pm

Marriott Wardman Park, Mezzanine Level, Madison AB

*This is a ticketed event. The cost to attend is \$65.**



Tom Zacharias

National Crop Insurance Services (NCIS)

“Ten Considerations Regarding the Role of Crop Insurance in the Agricultural Safety Net”

Tom Zacharias joined National Crop Insurance Services (NCIS) in July of 1990. He holds a Ph.D. in Agricultural Economics from the University of Illinois, with B.S. and M.S. degrees in Agricultural-Economics from Texas A&M University. Prior to joining NCIS, Tom was an Associate Professor in the Department of Economics at Iowa State University in Ames, Iowa and an Assistant Professor in the Department of Agricultural Economics at Louisiana State University in Baton Rouge, Louisiana.

International Section Speaker Series & Banquet

Monday, 8:00 pm–9:30 pm

Marriott Wardman Park, Mezzanine Level, Balcony B

*This is a ticketed event. The cost to attend is \$70.**



Kaushik Basu

World Bank

“Food and the Vulnerable: Theory and India’s Experience”

Kaushik Basu is Senior Vice President (Development Economics) and Chief Economist of the World Bank. He was until recently the Chief Economic Adviser to the Government of India and is currently on leave from Cornell University where he is Professor of Economics and the C. Marks Professor of International Studies. Mr. Basu is a Fellow of the Econometric Society and won India’s Padma Bhushan award as well as the National Mahalanobis Memorial award.

Mr. Basu’s contributions span development economics, welfare economics, industrial organization and game theory.

In addition to Cornell, he has taught at the Delhi School of Economics, Harvard, Princeton and MIT. He has published widely, including 160 papers in refereed journals and scholarly volumes, and has contributed articles to many widely read magazines and newspapers. He has authored several books including *Beyond the Invisible Hand: Groundwork for a new Economics* (Princeton University Press and Penguin). Mr. Basu holds a PhD in economics from the London School of Economics. He is the second World Bank Chief Economist from a developing country and the first from India.

***If available, tickets for these events will be sold at the registration desk until the day before the event.
No tickets will be sold the day of the event.**

Beltway Track Session

Washington Policy Update from Economists from the House and Senate Agriculture Committees

Monday, 9:30 am – 11:00 am

Marriott Wardman Park, Lobby Level, Salon 3
(see session 1022 for more information)

Economic Policies and Priorities to Promote U.S. International Trade

Monday, 1:00 pm – 2:30 pm

Marriott Wardman Park, Lobby Level, Salon 3
(see session 1047 for more information)

Organizer and Moderator:

Sally Thompson

Bureau of Economic Analysis

Panelists:



Mark Doms

Under Secretary of Commerce for Economic Affairs

Under Secretary Mark Doms serves as a top economic advisor to the United States Department of Commerce (DOC) and the Obama Administration. In this capacity, he contributes to policies and discussions on a wide range of issues including trade, manufacturing, taxation, innovation, competitiveness, retirement security, immigration, and education. Dr. Doms also leads the Economics and Statistics Administration (ESA), which includes two of our nation's leading information agencies: the Census Bureau and the Bureau of Economic Analysis (BEA). These agencies collect and produce information on the United States' dynamic population and economy, providing vital data to our nation's citizens, businesses, and leaders. The Census Bureau and BEA have a combined staff of over 10,000 and a budget exceeding \$1 billion. Dr. Doms also serves as the Secretary's appointed Board Representative to the Pension Benefit Guarantee Corporation.



Warren Maruyama

Hogan Lovells

Warren Maruyama's practice at Hogan Lovells focuses on U.S. trade policy, law, and legislation, and WTO and NAFTA disputes. He works with companies, industries, and trade associations on developing and executing strategies to address market access and regulatory barriers. He has successfully litigated antidumping and countervailing duty, Section 337, GSP, Section 201, and Section 301 investigations before the Office of the U.S. Trade Representative, Commerce Department, and U.S. International Trade Commission (ITC).



Michael Ferrantino

US International Trade Commission

Michael J. Ferrantino is Lead International Economist at the US International Trade Commission, where he has served since 1994. His primary responsibilities involve providing economic analysis of trade-related matters to the executive branch and Congress. He has taught at Southern Methodist, Youngstown State, Georgetown, American, and George Washington Universities, and has published widely on topics relating to international trade, including non-tariff measures, US-China trade, and the relationship of trade to the environment, innovation, and productivity. Recently, Michael was part of the modeling team for the World Economic Forum's report on trade facilitation in supply chains, *Enabling Trade: Valuing Growth Opportunities*.

Beltway Track Session

Funding Priorities and the Funding Climate

Monday, 2:45 pm – 4:15 pm

Marriott Wardman Park, Lobby Level, Salon 3
(see session 1073 for more information)

Working on the Hill: Observations from Two Former Ag Committee Economists

Monday, 4:30 pm – 6:00 pm

Marriott Wardman Park, Lobby Level, Salon 3
(see session 1098 for more information)

Grappling with Federal and State Budget Challenges

Tuesday, 11:15 am – 12:45 pm

Marriott Wardman Park, Lobby Level, Salon 2

Organizer and Moderator:



Susan Offutt
U.S. Government Accountability Office

Susan E. Offutt is Chief Economist of the Government Accountability Office, an arm of the U.S. Congress. From January 1996 to December 2006, she was Administrator of the U.S. Department of Agriculture's Economic Research Service. Prior to becoming Administrator of ERS, Susan was the Executive Director of the National Academy of Sciences Board on Agriculture, which conducts studies on a range of topics in agricultural science. Before taking over at the Board in January 1992, Susan was chief of the agriculture branch at the Office of Management and Budget in the Executive Office of the U.S. President. Susan served as assistant professor from 1982 to 1987 at the University

of Illinois, where she taught econometrics and public policy in the agricultural economics department. She is a past president and a fellow of the American Agricultural Economics Association and edited the Review of Agricultural Economics. She was named both a Distinguished and Meritorious Executive of the United States Senior Executive Service and is a fellow of the National Academy of Public Administration. Susan received a B.S. degree from Allegheny College, and an M.S. and a Ph.D. from Cornell University.

Panelists:



Bill Hoagland
Center for Bipartisan Policy

G. William Hoagland is a senior vice president at the Bipartisan Policy Center (BPC). Hoagland has completed 33 years of federal government service, 25 spent as staff in the U.S. Senate. In 2007 CIGNA Corporation appointed him as vice president of public policy to work with CIGNA business leaders, trade associations, business coalitions, and interest groups to develop CIGNA policy particularly on health care reform issues at both the federal and state levels.



Andy Morton
House Budget Committee

Andrew Morton has worked on a wide array of federal budget, agricultural policy, and regulatory issues over the course of his thirty years of federal government service. Since January 2011, he has served as Chairman Paul Ryan's Deputy Staff Director of the House Budget Committee. He has helped the Chairman develop and advance budget plans to put the federal budget on a sustainable path with a focus on tax and entitlement reform. He also monitors and analyzes federal budget trends and related economic developments. He first worked for Congressman Ryan as an agriculture budget analyst in 2007. From 1992 to 2007, Andy served as the Republican Staff Economist of the

Senate Agriculture Committee where he developed an expertise in agricultural commodity and crop insurance programs, and worked on landmark reforms to these programs contained in the 1996 farm bill. Prior to returning to the House Budget Committee, he served as Chief of the USDA Economic Research Service's Farm and Rural Business Branch and on the staff of the U.S. Commodity Futures Trading Commission. From 1983 to 1992, Andy was as an analyst at the Congressional Budget Office. Originally from Ames, Iowa, Andy received a PhD in agricultural economics and a BS in economics from Iowa State University.

Beltway Track Session



Barry Anderson
National Governors Association

Barry Anderson is currently Deputy Director of the National Governors Association (NGA), the collective voice of the nation's governors, in Washington. As Deputy he acts as NGA's COO, directing NGA staff in representing states on Capitol Hill and before the Administration, and in producing policy reports on innovative state programs. Before joining NGA, he was an independent consultant on US and international budget issues with clients including: President Obama's National Commission on Fiscal Responsibility and Reform; the Peterson-Pew Commission on Budget Reform; the Organization for Economic Cooperation and Development (OECD); the World Bank; the International

Monetary Fund (IMF); the German Marshall Fund; and the Hoover Institution at Stanford University. He is a Fellow of the National Academy of Public Administration and a board member of the Committee for a Responsible Federal Budget.

Future of Farm Policy Welfare Analysis in the Land Grant System: Challenges and Rewards

Tuesday, 1:00 pm – 2:30 pm

Marriott Wardman Park, Lobby Level, Salon 3

(see session 2116 for more information)

Reunions & Receptions

Monday, 9:00 pm–11:00 pm

Marriott Wardman Park, Lobby Level

Louisiana State University, University of Kentucky, University of Florida, University of Georgia, University of Arkansas, Auburn University, Mississippi State University, Texas A&M University

Salon 3

Cornell University, Pennsylvania State University

Maryland A

North Carolina State University, University of Maryland, Virginia Tech University

Maryland B

Colorado State University, University of Wyoming

Maryland C

Giannini Foundation of Agricultural Economics, University of California, Berkeley, University of California, Davis

Delaware B

University of Illinois, Michigan State University, Purdue University, The Ohio State University

Virginia B

Washington State University, Oregon State University, University of Idaho

Virginia C

Iowa State University, University of Minnesota, University of Wisconsin, Madison

Delaware A

University of Missouri, University of Nebraska, Kansas State University, Oklahoma State University

Virginia A